

Size
<ligne> **6 3/4 x 8'''**

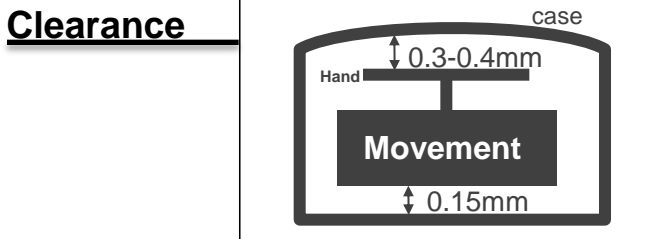
Height
<mm> **2.93**

Accuracy
<per Month> **±20 sec**

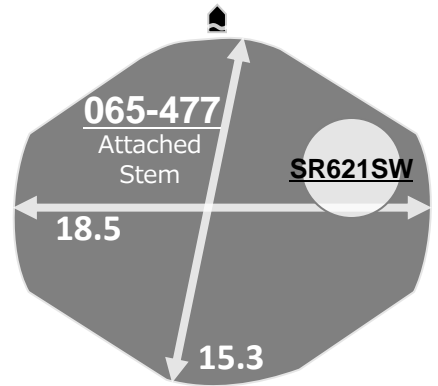
Battery Life
3 years

Battery consumption could be minimum by pulling out the stem (=Power-Saving)

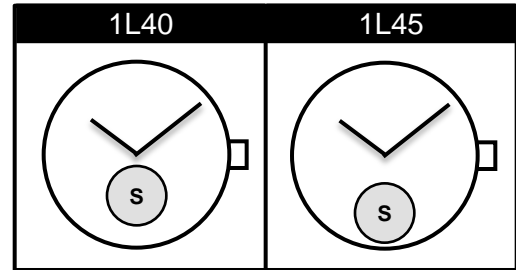
Balance Weight
<μN.m> **Second 0.07**
Minute 0.40



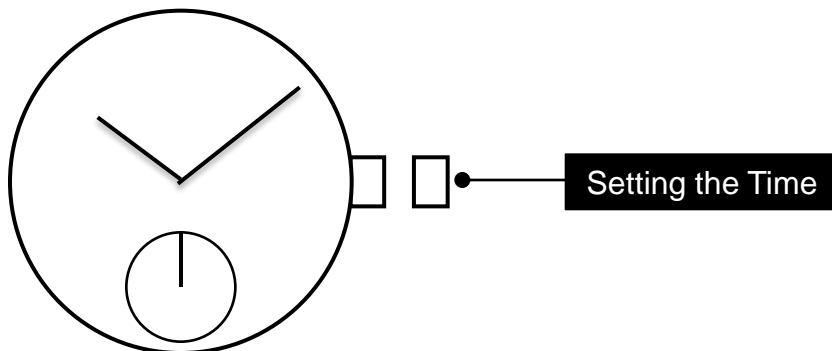
Original Package
1,000 pcs



Small Second



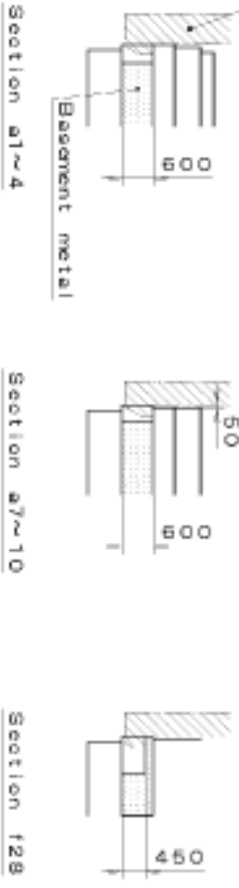
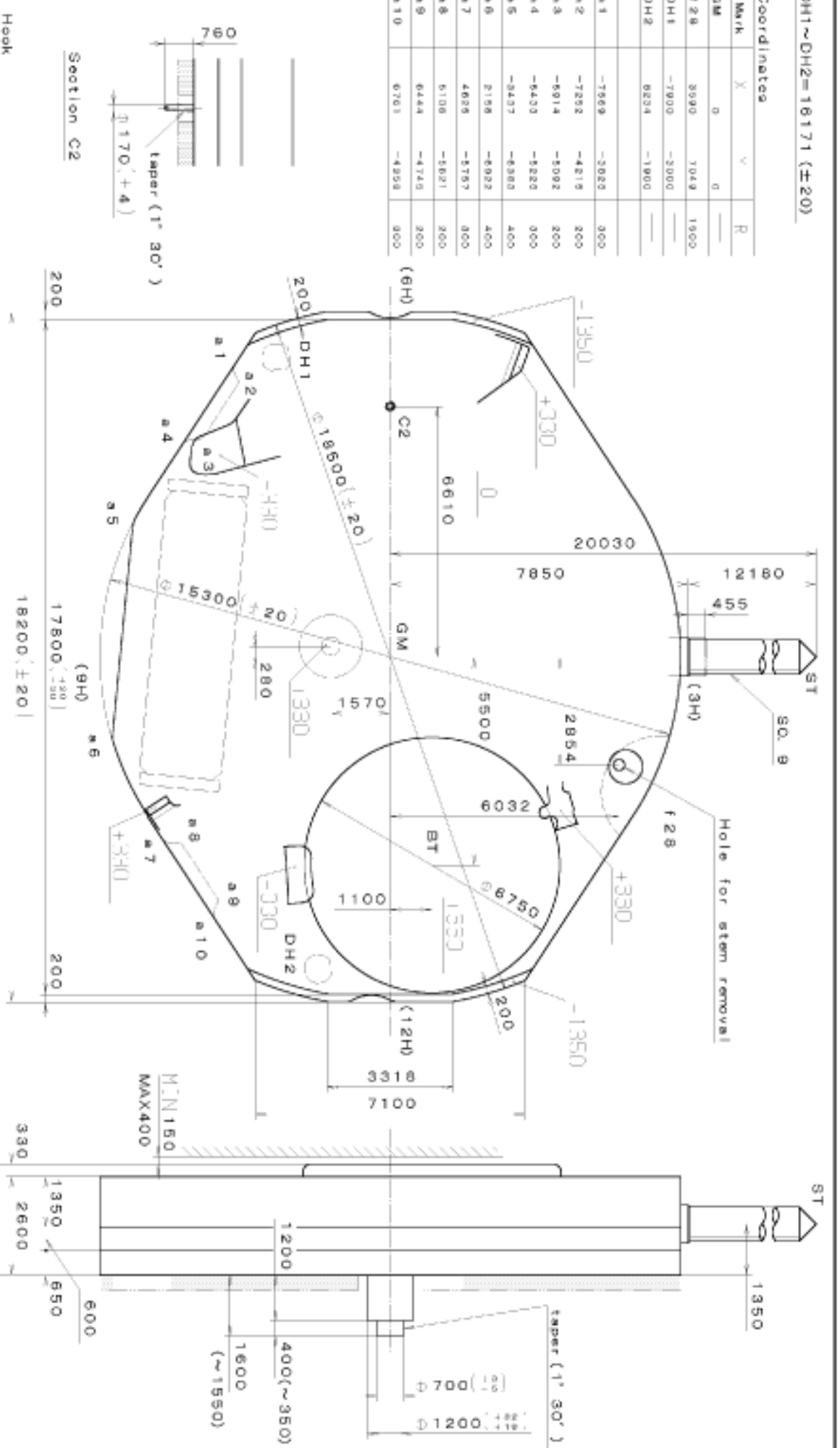
The Distance to Small Second
1L40 : 5.0
1L45 : 6.61



This drawing is provisional and subject to our reconfirmation and/or revision without notice

DH1~DH2=18171 (±20)

Coordinates			
Mark	X	Y	R
GM	0	0	—
128	3590	7049	1900
DH1	-7900	-2000	—
DH2	8234	-1900	—
a1	-7669	-2823	300
a2	-7292	-4219	200
a3	-6914	-5092	200
a4	-6433	-5220	300
a5	-6137	-4983	400
a6	-5768	-4922	400
a7	-4628	-4787	300
a8	5108	-5821	200
a9	6444	-4745	200
a10	6761	-4928	300



Quantity	Unit	Quantity	Unit
△	1/1000 mm	△	1/1000 mm
△	Scale	△	Scale
△	Date	△	Date
△	Drawn	△	Drawn
△	Checked	△	Checked
△	Approved	△	Approved

Material	General Tolerances	Name
Heat Treatment	Dimensions	Frame for Case
Hardness	Angles	Drawing No. 1L45C000
Plating		

Call No. 1L45

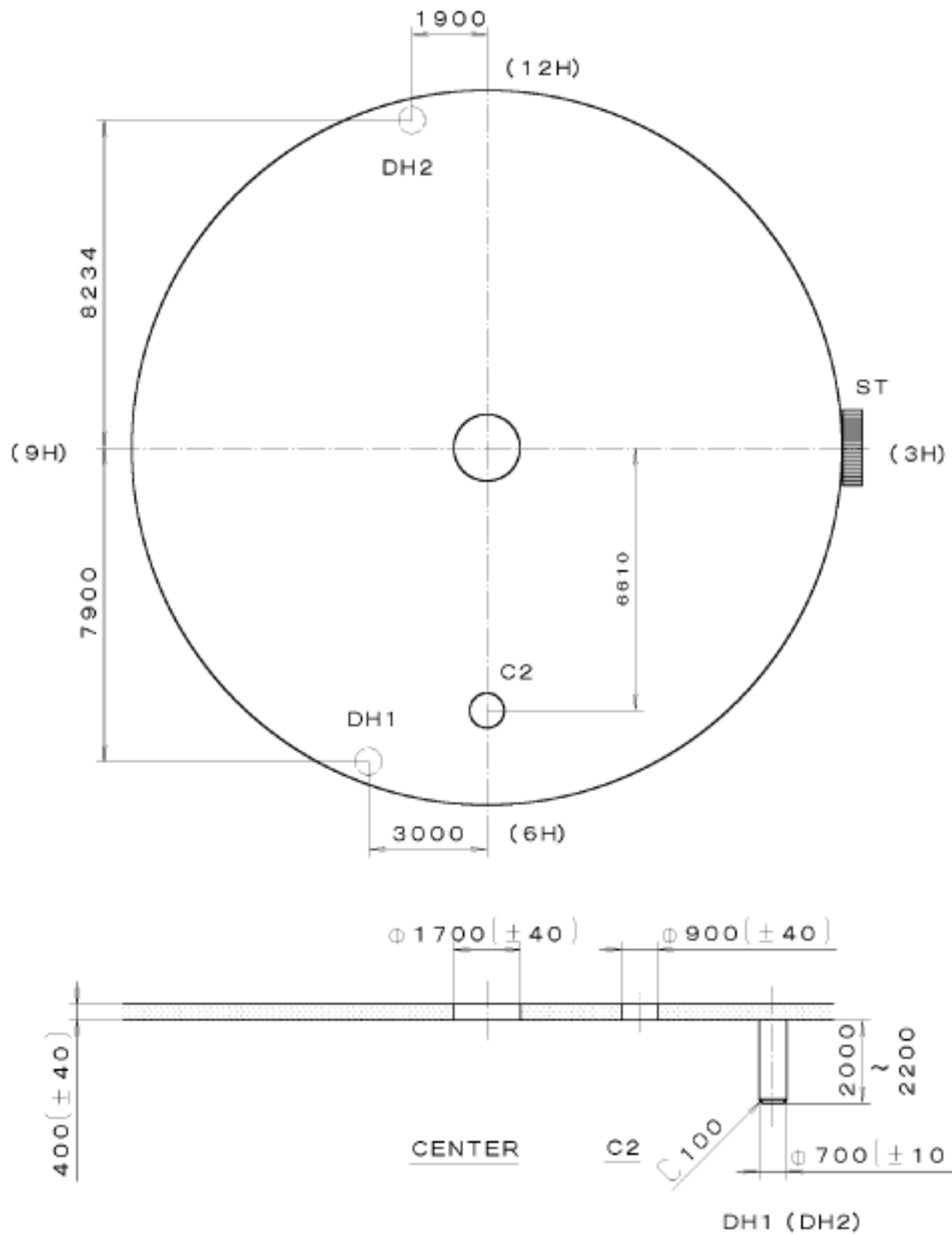
Part

1. Miyota

Drawing No. 1L45C000

This drawing is provisional and subject to our reconfirmation and/or revision without notice.

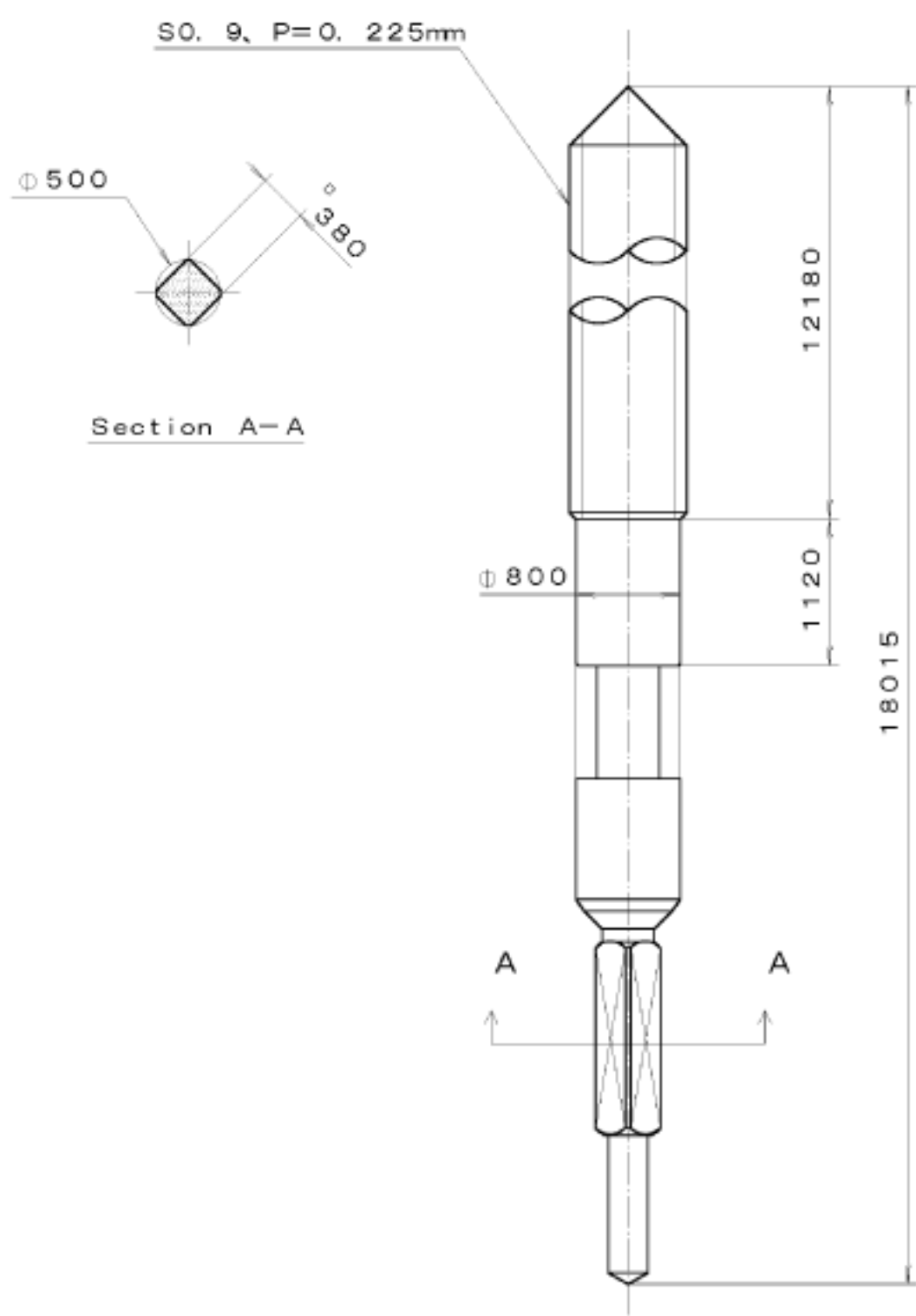
00-06-12
 3
 00-06-12
 1L45-10A (01) xxx
 T.P.W.



△		Quantity	Cal. No. :
△		Unit	1/1000 mm
△		Scale	7:1
△		Date	Parts:
△		Drawn	
△		Checked	T. Hiruta
△		Approved	Name:
Material			Indications for Dial
Heat Treatment		General Tolerances	Drawing No. : 1L45D000
Hardness		Dimensions	
Plating		Angles	

This drawing is provisional and subject to our reconfirmation and/or revision without notice.

xxx T.I.P.W. 065-477 (01) xxx (E100 1121 A-01 A-01 3 00-06-22



△		Quantity		Cal. No. :
△		Unit	1/1000 mm	Parts:
△		Scale	20:1	
△		Date		065-477
△		Drawn		
△		Checked	T. Hiruta	Name:
△		Approved		SETTING STEM
Material				Drawing No. : 47706000
Heat Treatment		General Tolerances		
Hardness		Dimensions		
Plating		Angles		