

**ISAQUARTZ**

Cal 608 / 1010



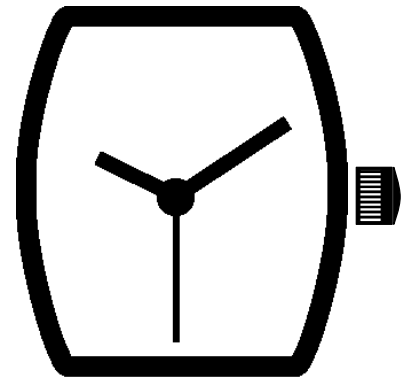
SWISS MADE

FAR EAST ASSEMBLY

6 3/4 x 8 '''

15.30 x 17.80 mm

H. 3.10



DATASHEET

BASIC  
3 HANDS

**ISASWISS**  
WATCH MECHANISMS

In conformity with RoHS standard

Doc. n° 0312213 - E Up date. 26/02/2014 - Page 1

### Caractéristiques:

Mouvement électronique à quartz. Moteur rotatif pas à pas, 1 pas par seconde.  
 3 Aiguilles, seconde au centre.  
 Tige 2 positions.  
 Dispositif stop mécanique et électrique.  
 0 rubis.

### Characteristics:

Electronic quartz movement. Rotating stepping motor, 1 step per second.  
 3 Hands, central second.  
 Stem 2 positions.  
 Mechanical and electrical stop device.  
 0 jewel.

### Technische Angaben:

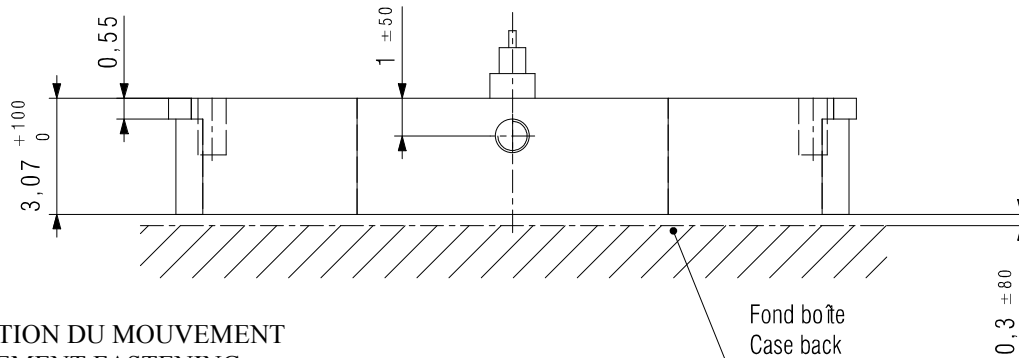
Elektronisches Quartz-Uhrwerk Schrittschaltmotor, 1 Schritt pro Sekunde.  
 2 Zeiger, Sekunde im Zentrum.  
 Stellwelle 2 Positionen.  
 Möglichkeit mechanisch oder elektrisch zu stoppen.  
 0 stein.

| Critères<br>Criteria<br>Kriterium   | Conditions<br>Conditions<br>Bedingungen | Min.          | Typ.           | Max.           | Unités<br>Units<br>Einheit                     |
|---|---|---------------|----------------|----------------|--|
| Consommation<br>Current consumption<br>Stromaufnahme  | U=1.55V T=25°C                          |               | 0.90           |                | µA   |
| Marche instantanée<br>Instantaneous rate<br>Momentaner Gang                                 | U=1.55V T=25°C                          | -0.5<br>(-15) |                | + 0.5<br>(+15) | s/jour s/day s/Tag<br>(s/mois s/month s/Monat) |
| Température de fonctionnement<br>Operating temperature<br>Betriebstemperatur                |   | 0             |                | + 50           | °C   |
| Résistance aux champs magnétiques<br>Resistance to magnetic fields<br>Magnetfeldabschirmung |   |               | 1500<br>(18.8) |                | A/m<br>(Oe)                                    |

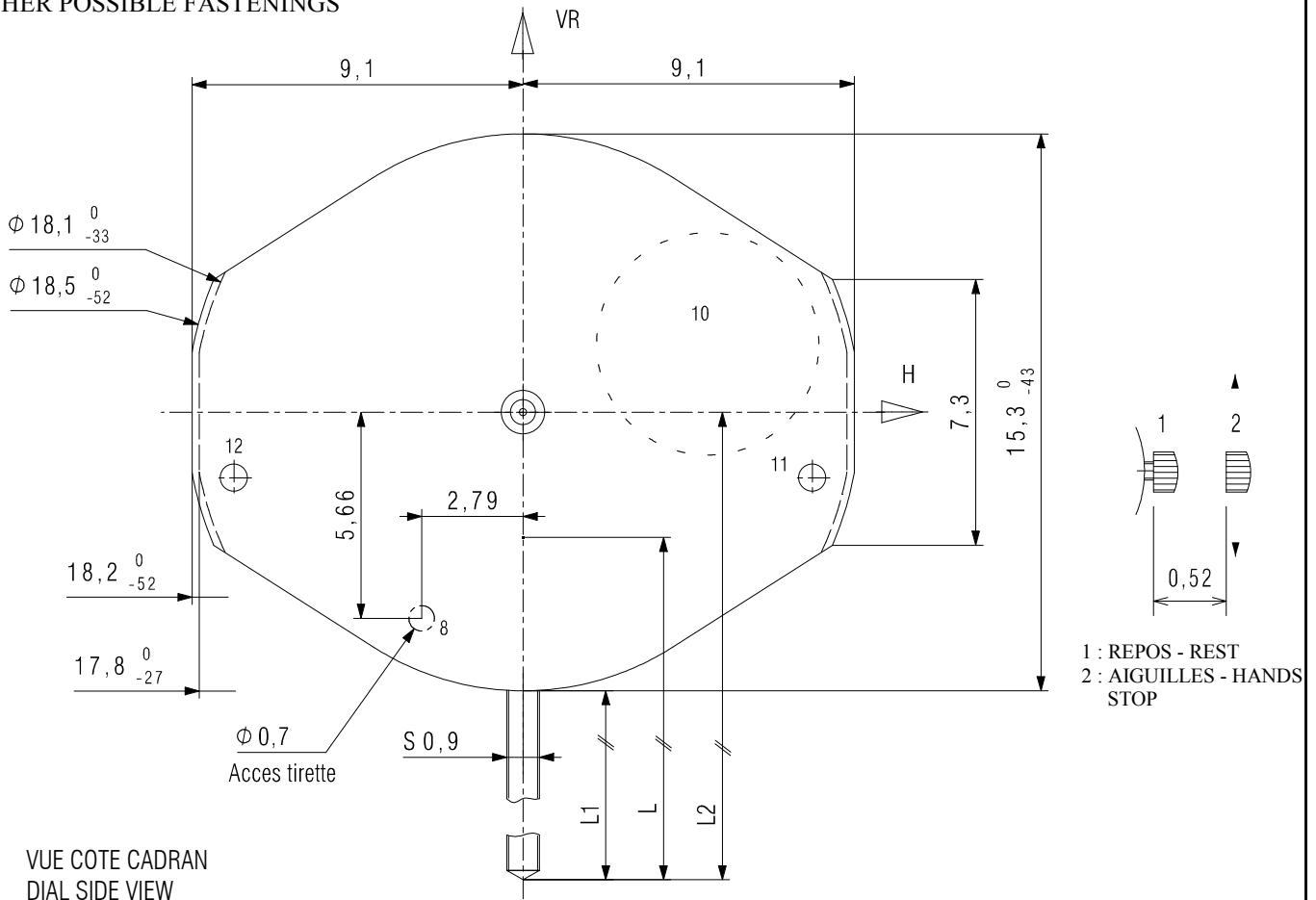
| Qté<br>Qty<br>Menge | Désignation<br>Designation<br>Bezeichnung | Type<br>Model<br>Typ | Tension<br>Voltage<br>Spannung | Code<br>Code<br>Code | Capacité<br>Capacity<br>Kapazität | Autonomie théorique<br>Theoretical Autonomy<br>Theoretische<br>Gangreserve |
|---------------------|---|----------------------|--------------------------------|----------------------|-----------------------------------|--|
| 1                   | Pile<br>Battery<br>Batterie 6.80 x 2.60   | SR 626 SW            | 1.55 V                         | 377                  | 28 mAh                            | 44<br>mois<br>months<br>Monate   |

### CAGE / FRAME



- FIXATION DU MOUVEMENT  
MOVEMENT FASTENING  
CERCLE D'EMBOITAGE  
CASING RING

- AUTRES FIXATIONS POSSIBLES  
OTHER POSSIBLE FASTENINGS



VUE COTE CADRAN  
DIAL SIDE VIEW

DIMENSIONS IN mm - TOLERANCES IN μm.

| Tige en position repos /<br>Stem in rest position | L             | L1   | L2    |
|---|---------------|------|-------|
| Standard / Standard                               | 18.30 +/- 100 | 13.1 | 20.75 |

In conformity with RoHS standard

Doc. n° 0312213 - E Up date . 26/02/2014 - Page 3

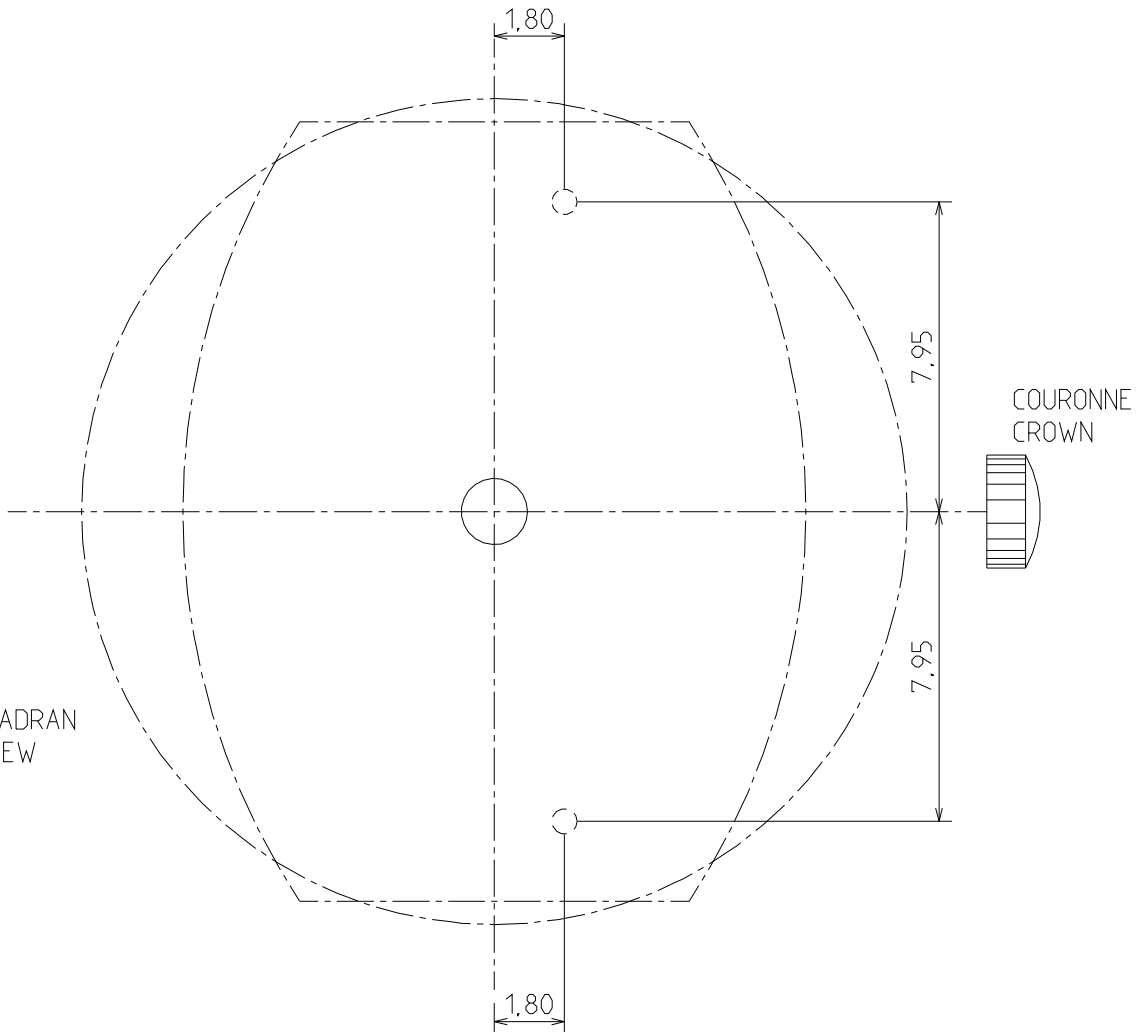
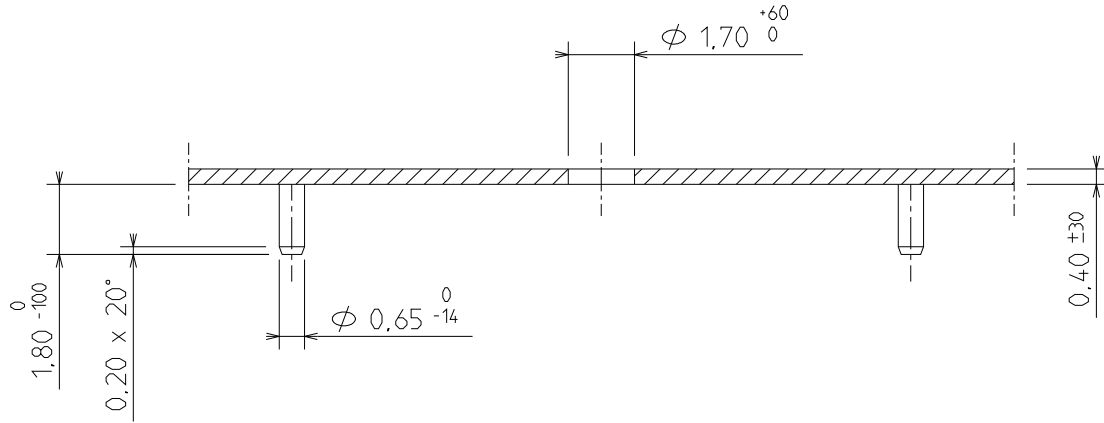
# ISAQUARTZ

608 / 1010

SWISS MADE  
FAR EAST ASSEMBLY

6 3/4 x 8'''  
15.30 x 17.80 mm

## CADRAN / DIAL



VUE COTE CADRAN  
DIAL SIDE VIEW

DIMENSIONS IN mm - TOLERANCES IN  $\mu$ m.

In conformity with RoHS standard

Doc. n° 0312213 - E Up date . 26/02/2014 - Page 4

**ISASWISS**  
WATCH MECHANISMS

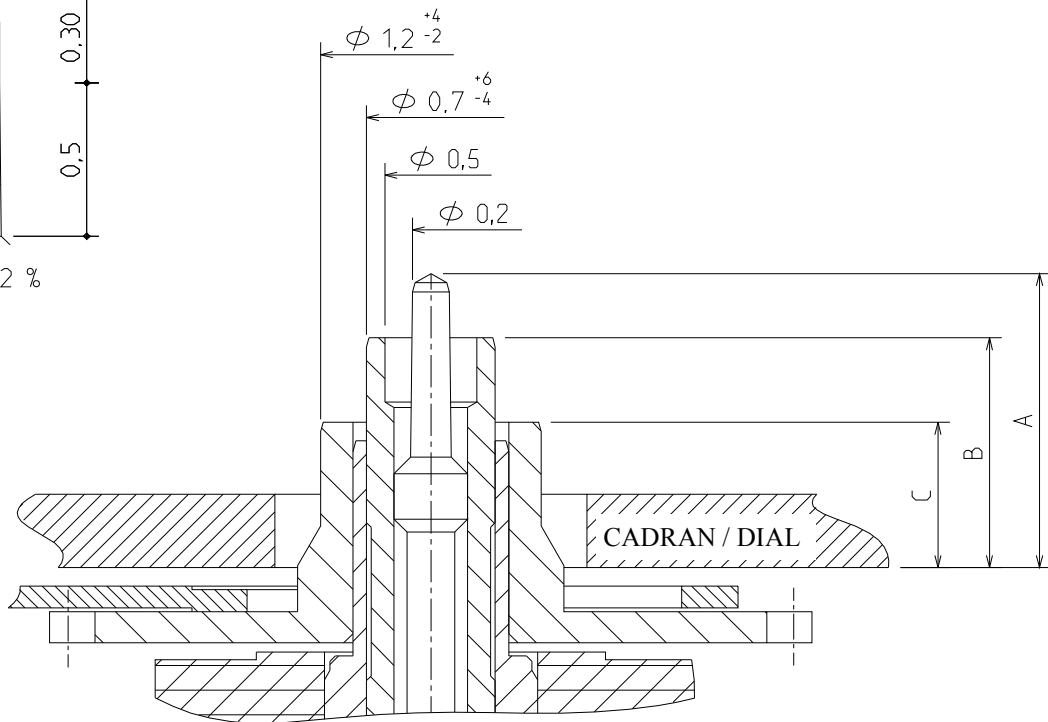
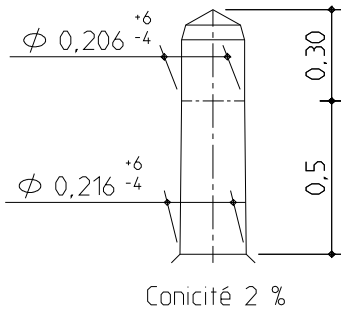
[www.isaswiss.com](http://www.isaswiss.com)

ISA SWISS S.A.  
Champ-Nauger 2  
CH -2416 Les Brenets  
Switzerland  
Tél +41 (0)32 930 80 85  
Fax +41 (0)32 930 80 86

ISA PACIFIC Co. Ltd.  
Room 1605, Eastern Center  
1065 King's Road, Quarry Bay,  
Hong-Kong  
Tél +852 21 68 33 88  
Fax +852 25 18 30 33

### AIGUILLAGE / HAND-FITTING

AUTRES AIGUILLAGES SUR DEMANDE  
OTHER HAND-FITTING ON REQUEST



| AIGUILLAGE / HAND-FITTING   | Dépassement / Height over dial seat   |                          |                              | Epaisseur cadran / Dial Thickness |
|-----------------------------|---------------------------------------|--------------------------|------------------------------|-----------------------------------|
|                             | A                                     | B                        | C                            |                                   |
|                             | Pignon central / Central wheel pinion | Chaussée / Cannon pinion | Roue des heures / Hour wheel |                                   |
| N°2                         | 1.60                                  | 1.25                     | 0.80                         | 0.40 maxi                         |
| N°4 High                    | 2.15                                  | 1.80                     | 1.40                         | 1.00 maxi                         |
| Hauteur tube<br>Pipe Height | 0.60                                  | 0.25                     | 0.50                         | -                                 |

| CHOCES 450 g / 450 g SHOCKS         | Masse / Mass | Balourd / Unbalance | Inertie / inertia         | FORCE DE CHASSAGE<br>PRESS-IN-FORCE |
|-------------------------------------|--------------|---------------------|---------------------------|-------------------------------------|
| Aiguille des heures<br>Hour Hand    | ≤ 20 mg      | ≤ 0.8 μNm           | ≤ 0.85 gr.mm <sup>2</sup> | ≤ 25 N                              |
| Aiguille des minutes<br>Minute Hand | ≤ 20 mg      | ≤ 0.8 μNm           | ≤ 0.85 gr.mm <sup>2</sup> | ≤ 25 N                              |
| Trotteuse centrale<br>Central Hand  | ≤ 5 mg       | ≤ 0.03 μNm          | ≤ 0.1 gr.mm <sup>2</sup>  | ≤ 25 N                              |

DIMENSIONS IN mm. - TOLERANCES IN μm.

In conformity with RoHS standard

Doc. n° 0312213 - E Up date . 26/02/2014 - Page 5