



Cal. AL21E

15.3 × 17.8 mm
H 2.99 mm

Items	Rev.	Page
Specifications	02	1
Appearance	10	2
Casing	05	3
Hand fitting	07	4
Hand setting stem	05	5
Dial	02	6
Casing ring	01	7

Date: 12/Apr./'13

S.EPSON Products

CAL. AL21E

Analog Quartz 6 3/4 × 8''' Standard Series Movement / Three Hands (H/M/S)

1. MOVEMENT DIMENSIONS

Outside diameter	15.30mm(3-9H) × 18.20mm(12-6H)
Casing diameter	15.30mm(3-9H) × 17.80mm(12-6H)
Total height	2.99mm

2. TIME STANDARD

Type of quartz oscillator	Tuning fork
Frequency of quartz oscillator	32,768 Hz
Accuracy	±20 seconds per month (on wrist)
Operating temperature range	-5°C to +50°C
Regulation device	Nil (Pre-adjusted)

3. INDICATOR / FUNCTIONS

3 Hands	Hour / Minute / Second
Reset switch	
Setting mechanism	Crown at normal position : Free Crown pulled out 1st click : Time setting / Reset

4. FEATURES

Jewels	0 Jewel
Anti-magnetism	Over 1600A/m (Direct current magnetic field)
Stepping motor	Type : Two poles stepping motor Step : 180° every second
Maximum unbalance of hands	Second hand : 0.06 μ N·m (6mg·mm) Minute hand : 0.6 μ N·m (60mg·mm) Hour hand : 0.5 μ N·m (50mg·mm)

5. BATTERY

Type / Size	Silver oxide battery / φ 6.8mm × t 2.6mm
Recommended battery	SR626SW (Maxell, Panasonic, Sony, Seizaiken)
Nominal voltage	1.55 V
Battery life	Approx. 2 years
Driving current consumption	Approx. 1.5 μ A
Operation stopping voltage	1.1 V

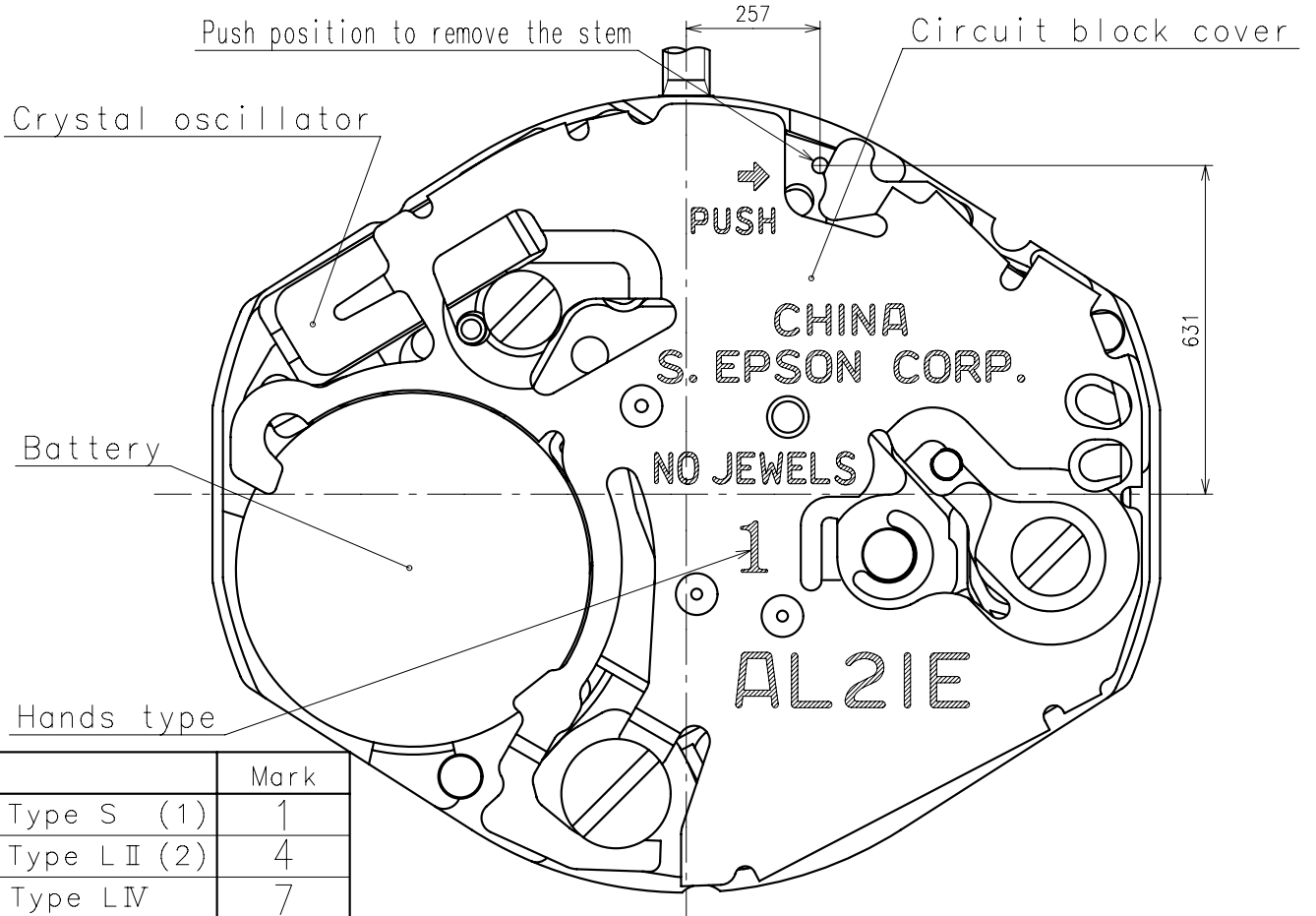
6. SEPARATED PARTS (Parts code)

Hand setting stem	0354788	AL21E1,AL21E2
	0354787	AL21E4
Battery	SR626SW	

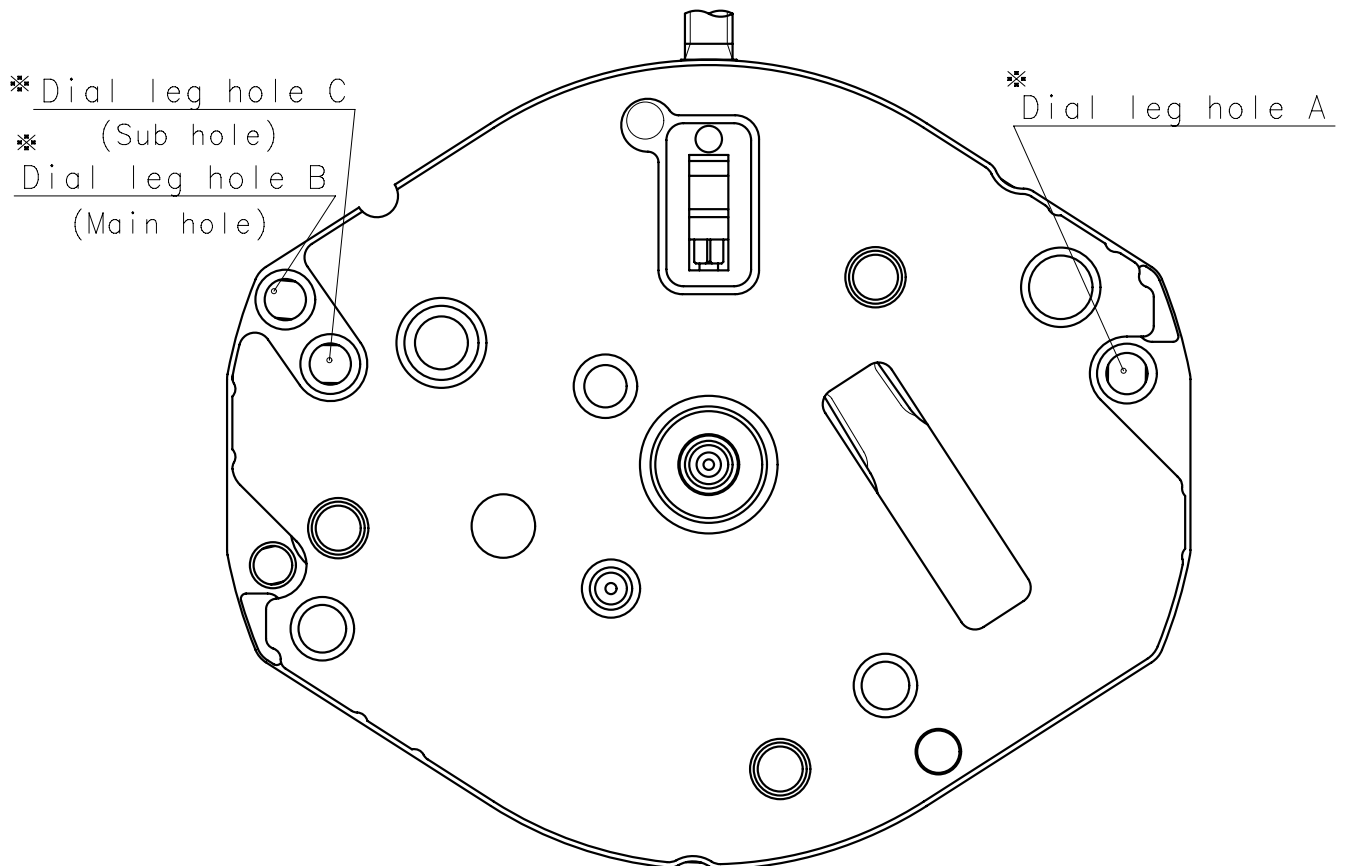
7. TEST OF ACCURACY

Equipment to be used	SEIKO quartz tester QT-99, Greiner quartz timer-C , Witschi Q-tester 4000
Duration of measurement	10 seconds
Microphone to be used	Electromagnetic detection type

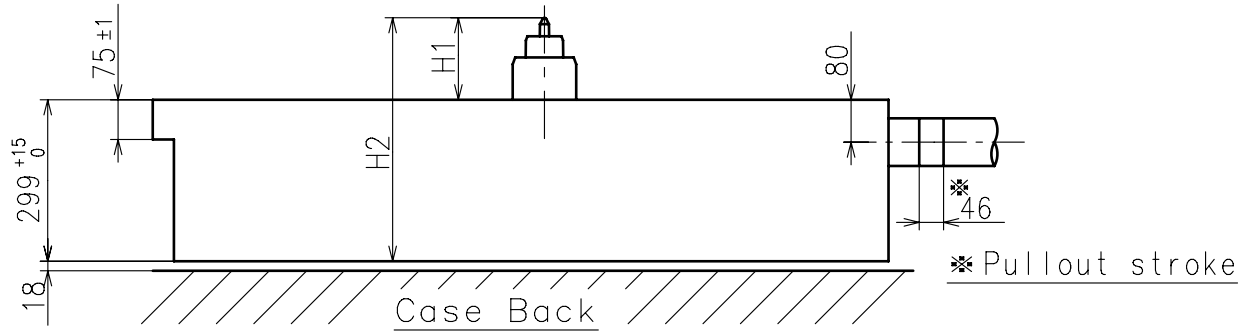
All specifications are subject to change without notice.



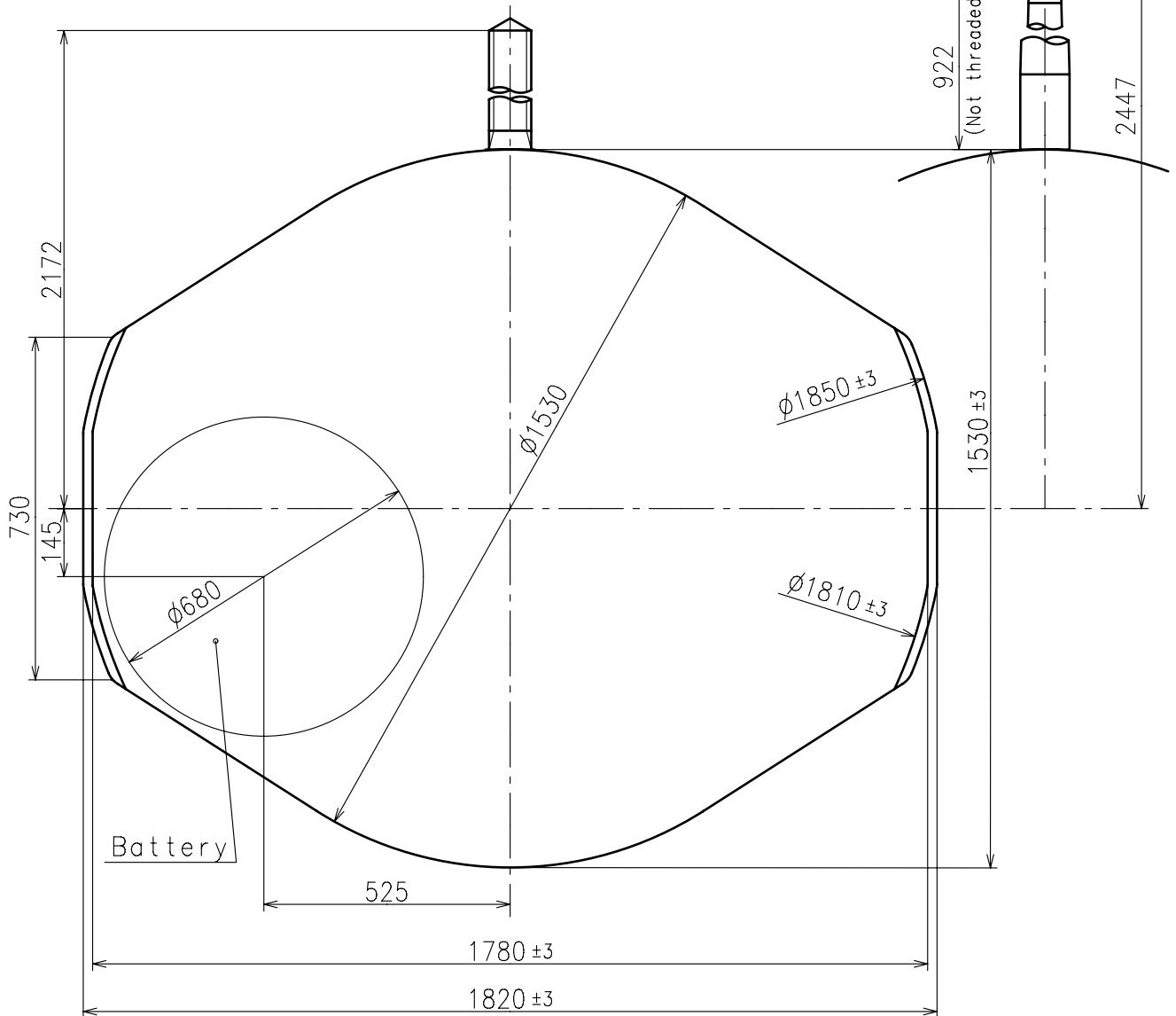
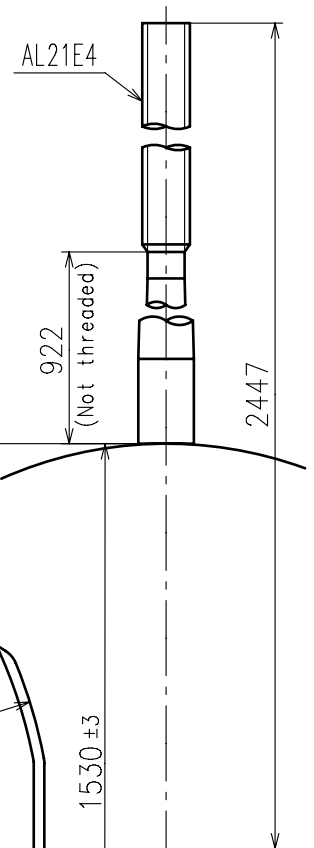
	Mark
Type S (1)	1
Type L II (2)	4
Type L IV	7



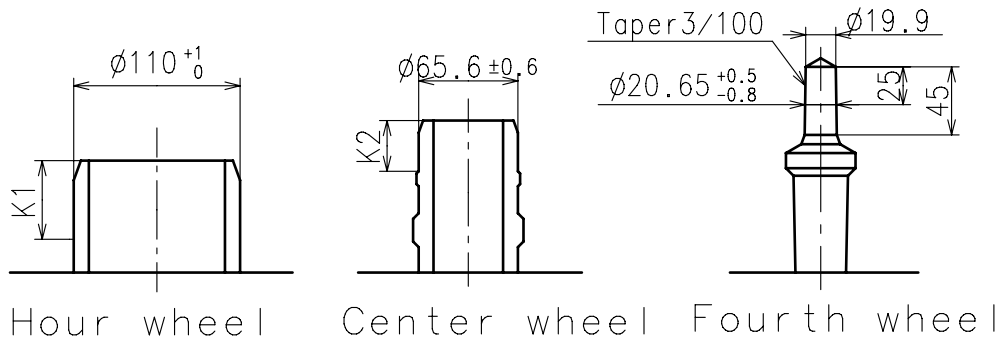
* : Combination of dial leg hole A-B, (A-C)



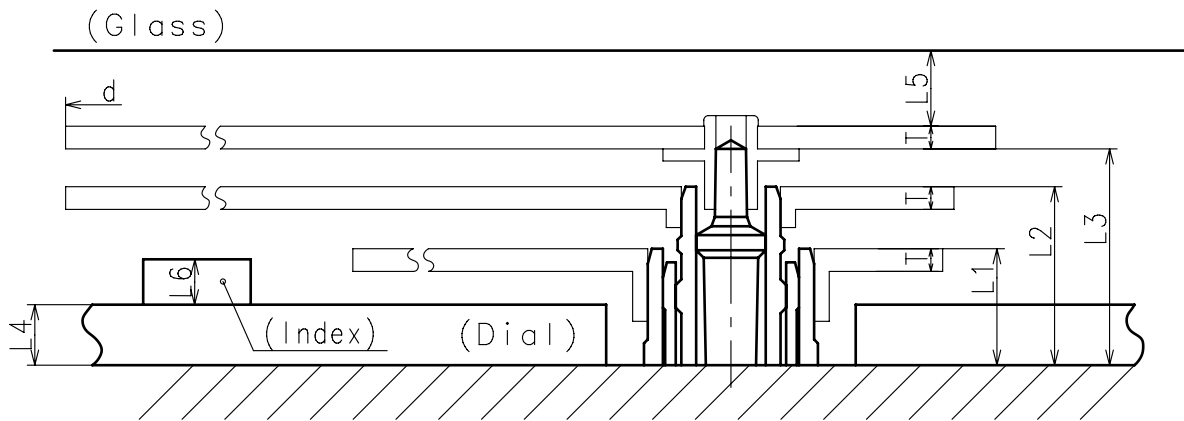
Center post		Type S AL21E1	Type LII AL21E2	Type LIV AL21E4
Maximum height from dial support	H1	143	251	371
Total height incl. movement	H2	448	556	676



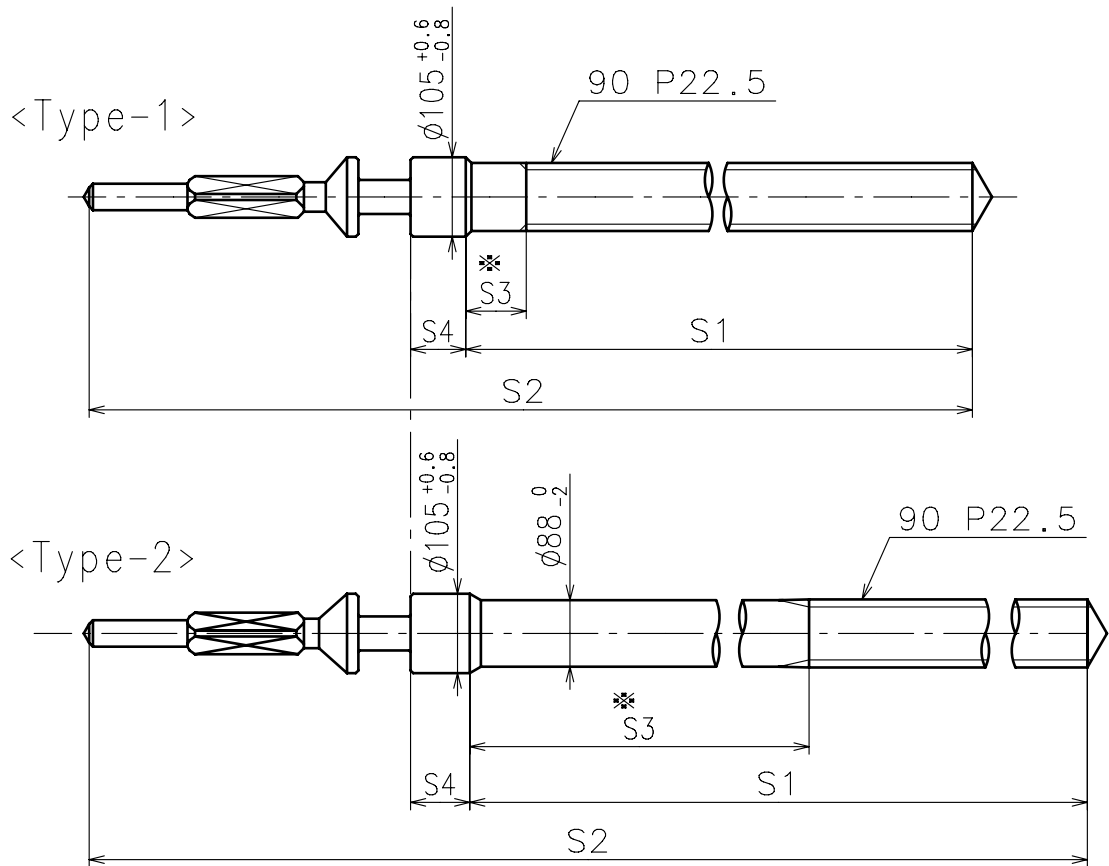
- * Second hand unbalance $\leq 0.06\mu N \cdot m$ ($6\mu g \cdot m$)
- * Minute hand unbalance $\leq 0.6\mu N \cdot m$ ($60\mu g \cdot m$)
- * Hour hand unbalance $\leq 0.5\mu N \cdot m$ ($50\mu g \cdot m$)



	Parts No.			Dimension	
	Hour wheel	Center wheel	Fourth wheel	K1	K2
Type S AL21E1	0271796	0221797	0241798	52	33.5
Type L II AL21E2	0271797	0221779	0241777	60	33.5
Type L IV AL21E4	0271756	0221765	0241756	60	33.5



	L1	L2	L3	L4	L5	L6	T	d
Type S AL21E1	80	118	143	40	MIN: 50	MAX: 30	15	MAX: $\phi 2500$
Type L II AL21E2	185	226	251	MAX: 150	MIN: 50	MAX: 30	15	MAX: $\phi 2500$
Type L IV AL21E4	297	343	371	MAX: 250	MIN: 50	MAX: 45	15	MAX: $\phi 2500$

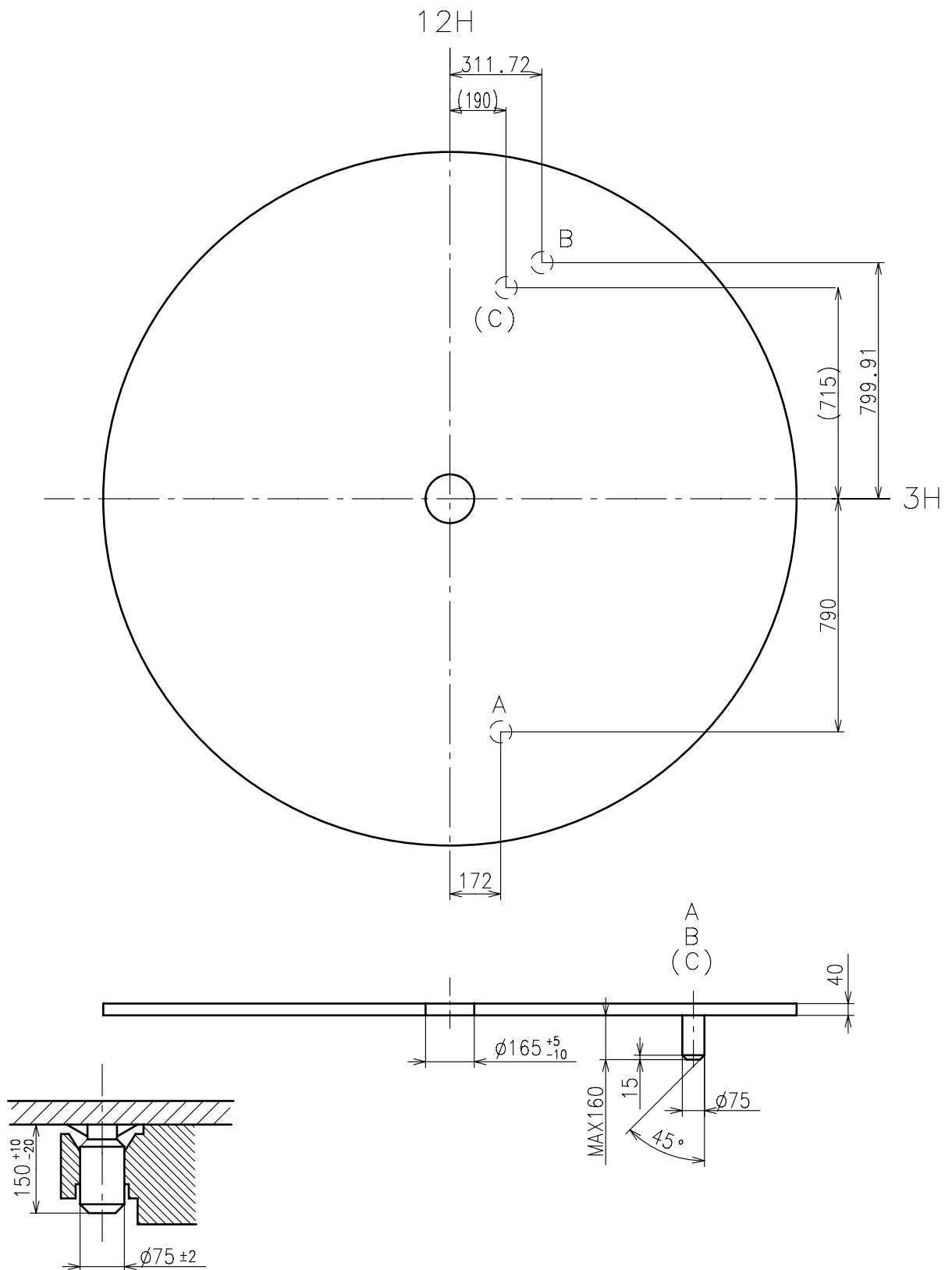


* Not threaded

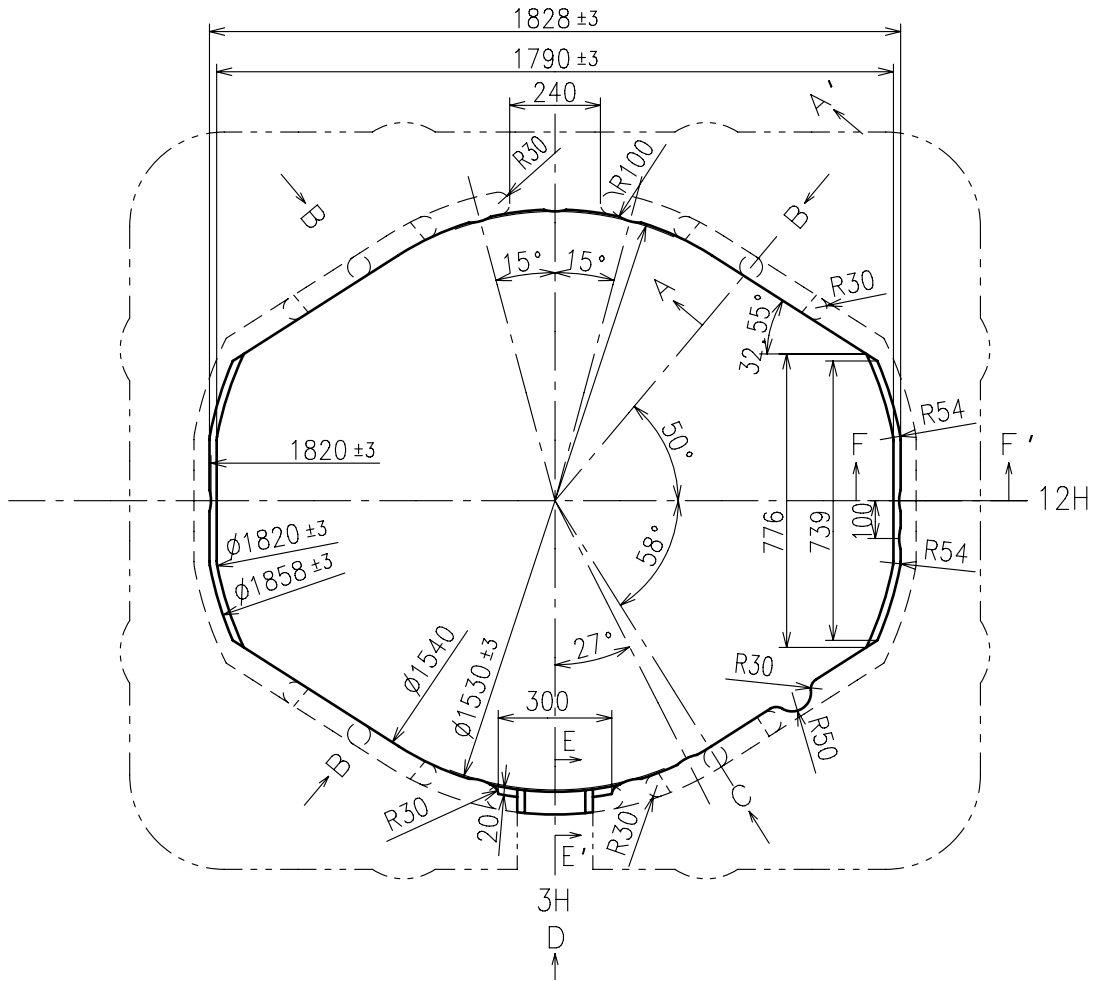
	Part No.	S1	S2	* S3	S4
Type-1 (Standard)	0354788	1427	1925	80	73
Type-2	0354787	1697	2200	887	78

Material : Steel

Hardness : Vickers 530±50



Use dial leg hole as like below A-B(Main hole) , A-C(Sub hole)

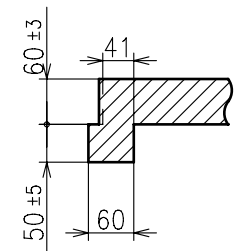
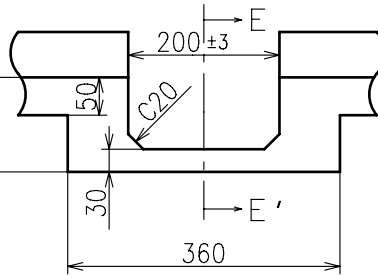
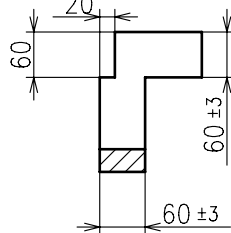
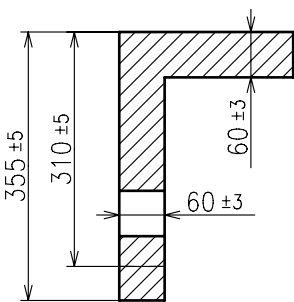


A-A' section

E-E' section

D view

F-F' section



B view

C view

