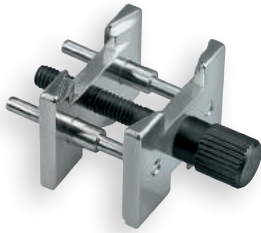


09



机芯座.....09-2

表垫.....09-13

机芯座

» Movement holder, nickel-plated brass, base Ø 31 mm. Equipped with adjustable screws to support pivots and endstones. Compatible with presses MSA05.100, 05.101, 05.109, 05.110, 05.111, 05.112, 05.114, 05.115, 05.116, 05.117 and 05.120.



MSA	Adjustable screws	机芯 ""	千克
09.010-01	1	3 3/4	0.033
09.010-02	1	4 1/4	0.029
09.010-03	1	4 1/2	0.029
09.010-48	1	4 3/4	0.030
09.010-50	1	4 7/8	0.077
09.010-05	1	5 1/2	0.033
09.010-06	1	6 3/4	0.038
09.010-08	1	7 3/4	0.042
09.010-09	1	8	0.042
09.010-10	1	8 1/4	0.043
09.010-11	1	8 3/4	0.046
09.010-12	1	9	0.047
09.010-13	1	9 1/4	0.049
09.010-14	1	9 3/4	0.051

MSA	Adjustable screws	机芯 ""	千克
09.010-15	1	10 1/2	0.055
09.010-22	1	11	0.058
09.010-16	1	11 1/2	0.061
09.010-17	1	11 3/4	0.063
09.010-28	1	12	0.065
09.010-32	1	12 1/4	0.069
09.010-23	1	12 1/2	0.068
09.010-67	1	12 3/4	X.XXX
09.010-18	1	13	0.071
09.010-19	1	13 1/4	0.073
09.010-46	1	13 1/2	0.077
09.010-36	1	13 3/4	0.077
09.010-42	1	16	0.100
09.010-45	1	16 1/2	0.100

Round movement holder.



MSA	Adjustable screws	机芯 ""	千克
09.010-27	1	3 3/4 x 6	0.034
09.010-00	1	3 3/4 x 6 3/4 x 8	0.034
09.010-04	1	5 1/2 x 6 3/4	0.037
09.010-07	1	6 3/4 x 8	0.040

Special shape movement holder.

» Specific movement holders, nickel-plated, equipped with adjustable screws to support pivots and endstones with and without pushers for control. Suitable for presses MSA05.100, 05.101, 05.109, 05.110, 05.111, 05.112, 05.114, 05.115, 05.116, 05.117 and 05.120.



MSA	机芯	千克
09.017	3520-D - 3540-D	X.XXX

Round movement holder without adjustable screw. For removing stems.



MSA	机芯	千克
09.016-47	4002-B - 4003-B - 4120-B - 4210-B	0.060
	4220-B - 5010-B - 5020-B - 5022-D	
	5030-D - 5040-B - 5040-F - 5040-D	
	5050-B - 5050-C - 5051-C - 5130-D	

Round movement holder without adjustable screw. For removing stems.



(1)

(2)

MSA	机芯	千克
09.010-60 (1)	762 - 763	0.050
09.010-61 (2)	762 - 763	0.050

Special shape movement holder.

(1) With 1 adjustable screw for hands fitting.
(2) Without adjustable screw for removing stems.



MSA	机芯	千克
09.010-53	057	0.042

Special shape movement holder with 1 adjustable



MSA	机芯	千克
09.010-54	980163	0.064

Special shape movement holder with 1 adjustable screw.

机芯座



MSA	机芯	千克
09.010-43	PUW 111 - 282001	0.045

Special shape movement holder with 1 adjustable screw.



MSA	机芯	千克
09.010-55	1002 - 1009	0.095

Round movement holder with 2 adjustable screws.



MSA	机芯	千克
09.010-41	7001	0.062

Round movement holder with 2 adjustable screws.



MSA	机芯	千克
09.010-38	UNITAS 6497 - 6498	0.102

Round movement holder with 2 adjustable screws.



MSA	机芯	千克
09.010-33	2094	0.070
09.010-29	251471	0.070
09.010-30	2894	0.093
09.010-34	5030R	0.070

Round movement holder with 2 pushers and 1 adjustable screw.



MSA	机芯	千克
09.010-39	DD 2025	0.089

Round movement holder with 2 pushers and 1 adjustable screw.



MSA	机芯	千克
09.010-20	Valjoux 7750	0.087

Round movement holder with 2 pushers and 2 adjustable screws.



MSA	机芯	千克
09.010-40	2894-2	0.070

Round movement holder with 2 pushers and 4 adjustable screws.



MSA	机芯	千克
09.010-44	G10211 - G10711	0.095

Round movement holder with 2 pushers and 4 adjustable screws.



MSA	机芯	千克
09.018	3520.D - 3540.D	X.XXX

Round movement holder with 2 pushers and 4 adjustable screws.



MSA	机芯	千克
09.010-47	4002-B - 4003-B - 4120-B - 4210-B	0.170
	4220-B - 5010-B - 5020-B - 5022-D	
	5030-D - 5040-B - 5040-D - 5050-B	
	5050-C - 5051-C - 5130-B - 5130-D	

Round movement holder with 2 pushers and 4 adjustable screws.

机芯座



MSA	机芯	千克
09.010-64	Valjoux 72	0.090

Round movement holder with 2 pushers and 4 adjustable screws.



MSA	机芯	千克
09.010-59	Valjoux 7750	0.092

Round movement holder with 2 pushers and 4 adjustable screws.



MSA	机芯	千克
09.010-62	8040.B	X.XXX

Round movement holder with 2 pushers and 4 adjustable screws.



MSA	机芯	千克
09.010-51	ISASWISS 8171 - 8172	0.008

Round movement holder with 2 pushers and 4 adjustable screws.



MSA	机芯	千克
09.010-68	251471	X.XXX

Round movement holder with 2 pushers and 4 adjustable screws.



MSA	机芯	千克
09.010-63	G15211	0.101

Round movement holder with 2 pushers and 4 adjustable screws.



MSA	机芯	千克
09.010-58	FP 1180	0.079

Round movement holder with 3 pushers and 4 adjustable screws.



MSA	机芯	千克
09.006	7750 - 7751 - 7753	0.114

Round movement holder with 3 pushers and 5 adjustable screws.



MSA	机芯	千克
09.010-21	251262	0.090

Round movement holder with 4 pushers and 4 adjustable screws.



MSA	机芯	千克
09.010-35	2892-A2	0.088

Round movement holder with 4 pushers and 4 adjustable screws.



MSA	机芯	千克
09.007	ETA A07	0.130

Round movement holder with 4 pushers and 5 adjustable screws.



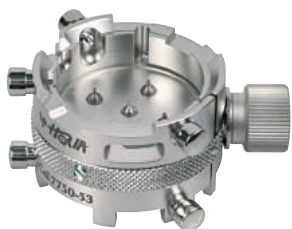
MSA	机芯	千克
09.010-52	5040-F	0.160

Round movement holder with 5 pushers and 4 adjustable screws.



MSA	机芯	千克
09.012	ZE 400 – 410 – 420	0.130

Round movement holder with 6 pushers and 2 adjustable screws.



MSA	机芯	千克
09.011	Valjoux 7750 – 7753	0.125

Round movement holder with 6 pushers and 4 adjustable screws.

Pusher reference : MSA09.011-P.

Adjustable screw reference : MSA09.011-V.

» Aluminium movement holders.



MSA	机芯	千克
09.010-31	OM 861	0.022

Round anodized aluminium movement holder.



MSA	机芯	千克
09.010-37	OM 1045	0.004

Round anodized aluminium movement holder with space for 2 pushers.



MSA	机芯	千克
09.010-24	● 2135	0.073
09.010-25	● 3035	0.023
09.010-26	● 1570	0.035

Anodized aluminium round movement holder with an adjustable central screw for supporting pivots and endstones.

» Porte-mouvements en plastique.



MSA	机芯	千克
09.050-02	11 1/2" 2824	0.014
09.050-01	13 1/4" 7750	0.015

Green plastic movement holder.
Other calibres upon request.

» Reversible movement holders with button.



MSA	机芯***	千克
09.020-05	5 1/2	0.007
09.020-09	7 1/2	0.014
09.020-08	7 3/4	0.010
09.020-11	8 3/4	0.010
09.020-12	9	0.015
09.020-13	9 1/4	0.015
09.020-10	9 1/2	0.015
09.020-15	10 1/2	0.015
09.020-25	11 1/4	0.035
09.020-16	11 1/2	0.023
09.020-19	12	0.022
09.020-17	12 1/4	0.020
09.020-20	12 1/2	0.020
09.020-22	13 1/4	0.022
09.020-26	13 1/2	0.025
09.020-23	13 3/4	0.026
09.020-27	15	0.030
09.020-29	16	0.035
09.020-24	16 1/2	0.037

Reversible round movement holder with button.



MSA	机芯***	千克
09.020-00	3 3/4 x 6	0.016
09.021	3 3/4 x 8	0.022
09.020-06	5 1/2 x 6 3/4	0.012
09.020-07	6 3/4 x 8	0.013

Steel reversible movement holder with button, special shape.



MSA	机芯***	千克
09.015-08	7 3/4	X.XXX
09.015-11	8 3/4	X.XXX
09.015-15	10 1/2	X.XXX
09.015-16	11 1/2	0.012
09.015-20	12 1/2	X.XXX
09.015-22	13 1/4	X.XXX
09.015-24	16 1/2	X.XXX

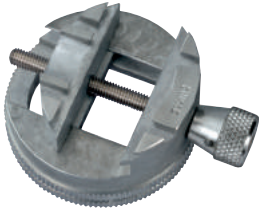
Porte-mouvement réversible à bouton en plexiglas, forme ronde.



MSA	机芯	千克
09.020-21	Valjoux 7750	0.041

Steel reversible round movement holder with button and 4 pushers.

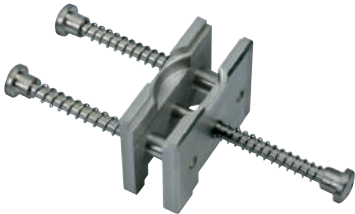
» Antimagnetic movement holder.



MSA	直径 mm	千克
09.001	45 x 35	0.047

Antimagnetic movement holder, Ø 5...22 mm.

» Extensible and reversible movement holders.



MSA	直径 mm	千克
09.002	60 x 25	0.025

Extensible and reversible steel movement holder with springs, 3 3/4...12 1/2".



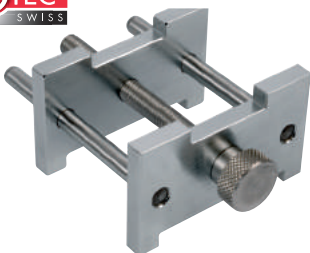
MSA	直径 mm	千克
09.003	40 x 25	0.032

Extensible and reversible steel movement holder with screw, 3 3/4...11".



MSA	直径 mm	千克
09.004	50 x 37	0.042

Extensible and reversible steel movement holder with screw, 8 3/4...19".



MSA	直径 mm	千克
09.005	75 x 50	0.138

Extensible and reversible steel movement holder with screw for pocket watches.



MSA	直径 mm	千克
09.103	55 x 25	0.027

Extensible and reversible synthetic movement holder with screw.

Calibres 3 3/4...11" and tightening on external Ø 12...30 mm.



MSA	直径 mm	千克
09.104	55 x 38	0.028

Extensible and reversible synthetic movement holder with screw.

Calibres 8 3/4...19" and tightening on external Ø 30...48 mm.

» 多用途表垫，主要由毛毡或者表面覆盖着合成纤维材料的橡胶圆盘制成，再以金属圆环或塑料圆环进行加固。



MSA	直径 mm	千克
09.305	直径 90 x 15	0.130

HOROTEC® 两面用表垫，由合成纤维材质制成，防刮性能佳。表垫较平的一面有一定的容纳空间，可用于存放螺丝、电池夹以及表冠等细小零件。而表垫较凹的一面，则是用于容纳表壳的半球形表镜。



MSA	直径 mm	Height mm	千克
09.300	50	13	0.026

镀铬金属圆环表垫。



MSA	直径 mm	Height mm	千克
09.301	53	13	0.025

镀铬金属圆环表垫。



MSA	直径 mm	Height mm	千克
09.302	55	11	0.011

红色塑料圆环表垫。

表垫



MSA	直径 mm	Height mm	千克
09.303	55	12	0.020

黑色塑料圆环表垫。



MSA	直径 mm	Height mm	千克
09.304	75	13	0.047

镀铬金属圆环表垫。

i 09 12和09 13页所述的所有表垫均可依据客户要求个性化的定制生产。

» *Synthetic case cushion.*



MSA	直径 mm	Height mm	千克
09.306	45	21	0.070

Casing cushion in synthetic red rubber with 1 flat face and 1 curved face.