

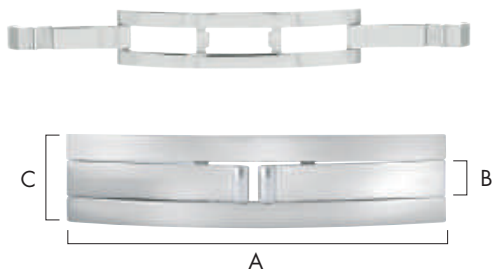


FERMOIRS CLASPS SCHLIESSEN CIERRES CHIUSURE FECHOS

Fermoirs pour bracelets
Clasps for straps
Schliessen für Armbänder
Cierres para correas
Chiusure per cinturini
Fechos para pulseiras

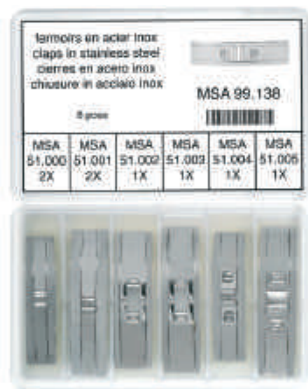


2



Fermeoir déployant ; acier inoxydable.
Folding clasp ; stainless steel.
Faltschliesse ; Edelstahl.
Cierre desplegable ; acero inoxidable.
Chiusura pieghevole ; acciaio inossidabile.
Fecho desdobrável ; aço inoxidável.

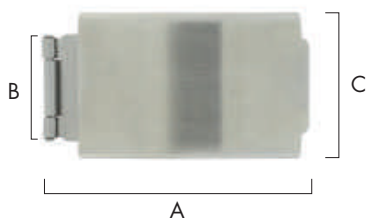
MSA	1/1	A mm	B mm	C mm	Kg
51.005		35.50	3.50	8	0.004
51.007		35.50	4	7	0.004
51.001		36.00	4.50	9	0.005
51.003		38.00	7	10	0.005
51.004		40.50	4	10	0.006
51.002		40.50	7	10	0.005
51.000		41.00	6	10	0.007



MSA	Qt.	Kg
99.138	8x	0.065

Assortiment de 8 fermeoirs déployants ; acier inoxydable.
Assortiment of 8 folding clasps ; stainless steel.
Sortiment von 8 Faltschliessen ; Edelstahl.
Surtido de 8 cierres desplegadas ; acero inoxidable.
Assortimento di 8 chiusure pieghevoli ; acciaio inossidabile.
Sortido de 8 fechos desdobráveis ; aço inoxidável.

Contenu - Contents - Inhalt - Contenido - Contenuto - Conteúdo :
6 modèles - models - Modelle - modelos - modelli - modelos
1x MSA51.002 /.003 /.004 /.005
2x MSA51.000 /.001



Fermeoir déployant ; acier inoxydable.

Folding clasp ; stainless steel.

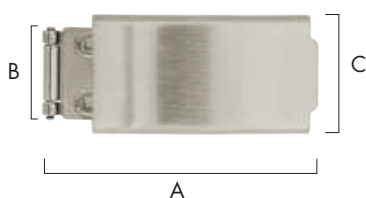
Faltschliesse ; Edelstahl.

Cierre desplegable ; acero inoxidable.

Chiusura pieghevole ; acciaio inossidabile.

Fecho dobrável ; aço inoxidável.

MSA	A mm	B mm	C mm	Bracelets/Straps mm	Kg
51.025-10	38.00	9.00	10.00	10	0.005
51.025-12	38.50	10.00	12.00	12	0.005
51.025-14	37.50	12.00	14.00	14	0.005
51.025-16	39.00	13.50	16.00	16	0.005
51.025-22B	40.00	22.00	22.00	22	0.008



Fermeoir déployant ; acier inoxydable.

Folding clasp ; stainless steel.

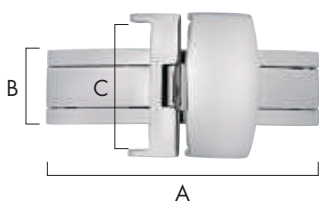
Faltschliesse ; Edelstahl.

Cierre desplegable ; acero inoxidable.

Chiusura pieghevole ; acciaio inossidabile.

Fecho dobrável ; aço inoxidável.

MSA	A mm	B mm	C mm	Bracelets/Straps mm	Kg
51.025-16A	38.50	14.50	16.00	16	0.005
51.025-18A	38.50	14.50	18.00	18	0.005
51.025-18	38.50	15.50	18.00	18	0.005
51.025-20A	39.00	17.50	20.00	20	0.006
51.025-22	38.00	16.00	22.00	22	0.006



Fermeoir déployant ; acier inoxydable.

Folding clasp ; stainless steel.

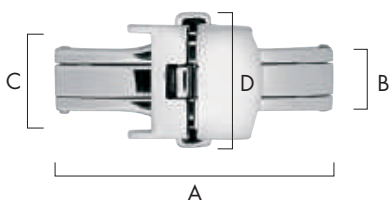
Faltschliesse ; Edelstahl.

Cierre desplegable ; acero inoxidable.

Chiusura pieghevole ; acciaio inossidabile.

Fecho desdobrável ; aço inoxidável.

MSA	A mm	B mm	C mm	Bracelets/Straps mm	Kg
51.008-10	35.50	8.00	10.00	10	0.007
51.008-12	36.00	8.00	12.00	12	0.008
51.008-14	36.00	8.00	14.00	14	0.010
51.008-16	40.00	11.00	16.00	16	0.012
51.008-18	40.00	11.00	18.00	18	0.012
51.008-20	40.00	11.00	20.00	20	0.012
51.008-22	40.00	11.00	22.00	22	0.012
51.008-24	40.00	11.00	24.00	24	0.012



Fermeoir déployant avec boutons à pression ; acier inoxydable.

Folding clasp with push buttons ; stainless steel.

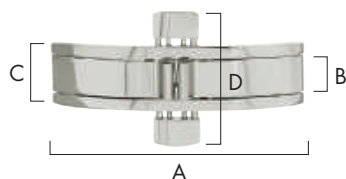
Faltschliesse mit Druckknöpfen ; Edelstahl.

Cierre desplegable con botones a presión ; acero inoxidable.

Chiusura pieghevole con bottoni a pressione ; acciaio inossidabile.

Fecho desdobrável com botões de pressão ; aço inoxidável.

MSA	A mm	B mm	C mm	D mm	Bracelets/Straps mm	Kg
51.010-B	36	8	12.00	17.00	12	0.011
51.010-14	39	11	14.00	18.00	14	0.012
51.010-16	39	11	16.00	22.00	16	0.013
51.010-18	39	11	18.00	24.00	18	0.014
51.010-20	39	11	20.00	26.00	20	0.014
51.010-22	39	11	22.00	27.00	22	0.015
51.010-24	39	11	24.00	28.00	24	0.015



Fermeoir déployant avec boutons à pression ; acier inoxydable.

Folding clasp with push buttons ; stainless steel.

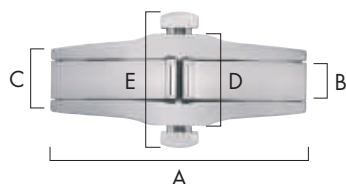
Faltschliesse mit Druckknöpfen ; Edelstahl.

Cierre desplegable con botones a presión ; acero inoxidable.

Chiusura pieghevole con bottoni a pressione ; acciaio inossidabile.

Fecho desdobrável com botões de pressão ; aço inoxidável.

MSA	A mm	B mm	C mm	D mm	Kg
51.017	36.00	4.00	8.00	18.00	0.005
51.020	40.00	6.00	10.00	22.00	0.007



Fermeoir déployant avec boutons à pression ; acier inoxydable.

Folding clasp with push buttons ; stainless steel.

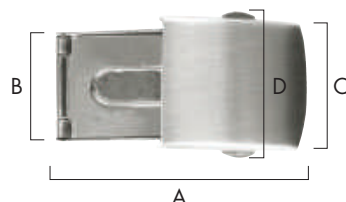
Faltschliesse mit Druckknöpfen ; Edelstahl.

Cierre desplegable con botones a presión ; acero inoxidable.

Chiusura pieghevole con bottoni a pressione ; acciaio inossidabile.

Fecho desdobrável com botões de pressão ; aço inoxidável.

MSA	A mm	B mm	C mm	D mm	E mm	Kg
51.018	35.50	4.50	8.00	11.00	18.00	0.006
51.009-15	36.00	4.00	8.00	10.00	16.00	0.006
51.019	37.00	4.50	8.00	10.00	16.00	0.006
51.021	40.00	6.00	11.00	14.00	21.00	0.010
51.009-20	40.00	7.00	11.00	14.00	21.00	0.009
51.022	40.00	7.00	11.00	16.00	23.00	0.009



Fermeoir déployant avec boutons à pression ; acier inoxydable.

Folding clasp with push buttons ; stainless steel.

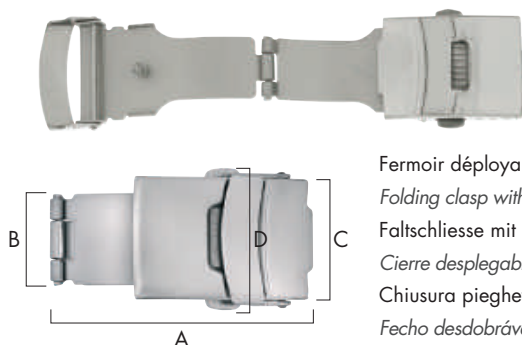
Faltschliesse mit Druckknöpfen ; Edelstahl.

Cierre desplegable con botones a presión ; acero inoxidable.

Chiusura pieghevole con bottoni a pressione ; acciaio inossidabile.

Fecho desdobrável com botões de pressão ; aço inoxidável.

MSA	A mm	B mm	C mm	D mm	Bracelets/Straps mm	Kg
51.023-12	34.00	10.00	12.00	17.00	12	0.005
51.023-14	42.00	12.00	14.00	18.00	14	0.005
51.023-16	42.00	14.00	16.00	20.00	16	0.006
51.023-18	41.50	12.00	18.00	22.00	18	0.006
51.023-20	42.50	14.00	20.00	25.00	20	0.008
51.023-22	42.00	20.00	22.00	26.00	22	0.008



Fermeoir déployant avec boutons à pression ; acier inoxydable.

Folding clasp with push buttons ; stainless steel.

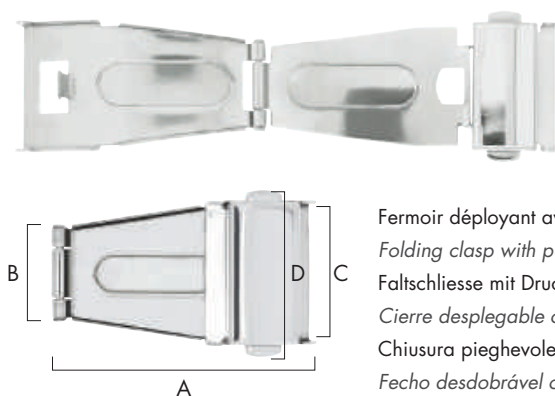
Faltschliesse mit Druckknöpfen ; Edelstahl.

Cierre desplegable con botones a presión ; acero inoxidable.

Chiusura pieghevole con bottoni a pressione ; acciaio inossidabile.

Fecho desdobrável com botões de pressão ; aço inoxidável.

MSA	A mm	B mm	C mm	D mm	Bracelets/Straps mm	Kg
51.011-12	40.00	9.00	12.00	17.00	12	0.011
51.011-14	40.00	11.00	14.00	19.00	14	0.012
51.011-16	40.00	13.00	16.00	21.00	16	0.013
51.011-18	40.00	13.00	18.00	23.00	18	0.015
51.011-20	40.00	13.00	20.00	25.00	20	0.017
51.011-22	40.00	17.00	22.00	27.00	22	0.019
51.011-24	44.00	17.00	24.00	29.00	24	0.020



Fermeoir déployant avec boutons à pression ; acier inoxydable.

Folding clasp with push buttons ; stainless steel.

Faltschliesse mit Druckknöpfen ; Edelstahl.

Cierre desplegable con botones a presión ; acero inoxidable.

Chiusura pieghevole con bottoni a pressione ; acciaio inossidabile.

Fecho desdobrável com botões de pressão ; aço inoxidável.

MSA	A mm	B mm	C mm	D mm	Bracelets/Straps mm	Kg
51.012-10	35.00	9.50	10.00	14.00	10	0.005
51.012-12	30.00	8.00	12.00	16.00	12	0.005
51.012-14	35.00	11.00	13.00	18.00	14	0.006
51.012-15	35.00	11.00	14.00	18.00	15	0.006
51.012-16	37.00	12.00	15.00	19.00	16	0.006
51.012-17	33.00	11.00	17.00	21.00	17	0.006
51.012-18	37.00	12.00	18.00	22.00	18	0.007
51.012-19	37.00	12.00	18.00	22.00	19	0.007
51.012-20	37.50	14.00	19.00	23.00	20	0.007
51.012-22	37.00	14.00	21.00	25.00	22	0.009
51.012-24	37.00	16.00	23.00	27.00	24	0.009



Fermeoir déployant ; acier inoxydable.

Folding clasp ; stainless steel.

Faltschliesse ; Edelstahl.

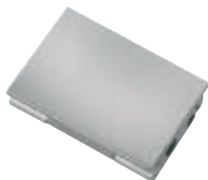
Cierre desplegable ; acero inoxidable.

Chiusura pieghevole ; acciaio inossidabile.

Fecho desdobrável ; aço inoxidável.



MSA	A mm	B mm	C mm	Kg
51.006-B	33.00	4.00	9.00	0.004
51.006-10	36.00	6.00	14.00	0.006



MSA	Bracelets/Straps mm	Kg
51.015-03	3	0.001
51.015-04	4	0.001
51.015-05	5	0.002
51.015-06	6	0.002
51.015-07	7	0.002
51.015-08	8	0.002
51.015-09	9	0.002
51.015-10	10	0.003

MSA	Bracelets/Straps mm	Kg
51.015-11	11	0.003
51.015-12	12	0.003
51.015-13	13	0.003
51.015-14	14	0.003
51.015-15	15	0.004
51.015-16	16	0.004
51.015-17	17	0.004

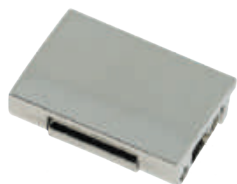
Fermeir simple couleur acier ; acier.
Steel colour simple clasp ; steel.
 Stahlfarbe einfacher Schliesse ; Stahl.
Cierre simple color acero ; acero.
 Chiusura semplice colore acciaio ;
 acciaio.
Fecho simples cor aço ; aço.



MSA	Bracelets/Straps mm	Kg
51.016-03	3	0.001
51.016-04	4	0.001
51.016-05	5	0.001
51.016-06	6	0.002
51.016-07	7	0.002
51.016-08	8	0.002
51.016-09	9	0.002

MSA	Bracelets/Straps mm	Kg
51.016-10	10	0.002
51.016-11	11	0.003
51.016-12	12	0.003
51.016-13	13	0.003
51.016-15	15	0.003
51.016-17	17	0.004

Fermeir simple jaune ; acier.
Yellow simple clasp ; steel.
 Gelber einfacher Schliesse ; Stahl.
Cierre simple amarillo ; acero.
 Chiusura semplice gialla ; acciaio.
Fecho simples amarelo ; aço.



MSA	Bracelets/Straps mm	Kg
51.013-03*	3	0.001
51.013-04*	4	0.001
51.013-05*	5	0.002
51.013-06*	6	0.002
51.013-07*	7	0.002
51.013-08*	8	0.002

MSA	Bracelets/Straps mm	Kg
51.013-10*	10	0.003
51.013-11*	11	0.003
51.013-12*	12	0.003
51.013-13*	13	0.003
51.013-14*	14	0.003
51.013-15*	15	0.004

Fermeoir simple couleur acier ; acier.
Steel colour simple clasp ; steel.
Stahlfarbe einfacher Schliesse ; Stahl.
Cierre simple color acero ; acero.
Chiusura semplice colore acciaio ;
acciaio.
Fecho simples cor aço ; aço.

* *Jusqu'à épuisement des stocks / Will be discontinued after end of stock / Solange Vorrat /
Hasta agotamiento del stock / Fino ad esaurimento dello stock / Até esgotamento do stock*



MSA	Bracelets/Straps mm	Kg
51.014-05*	5	0.001
51.014-06*	6	0.002
51.014-07*	7	0.002
51.014-08*	8	0.002
51.014-10*	10	0.002

MSA	Bracelets/Straps mm	Kg
51.014-11*	11	0.003
51.014-12*	12	0.003
51.014-13*	13	0.003
51.014-14*	14	0.003
51.014-15*	15	0.003

Fermeoir simple jaune ; acier.
Yellow simple clasp ; steel.
Gelber einfacher Schliesse ; Stahl.
Cierre simple amarillo ; acero.
Chiusura semplice gialla ; acciaio.
Fecho simples amarelo ; aço.

* *Jusqu'à épuisement des stocks / Will be discontinued after end of stock / Solange Vorrat /
Hasta agotamiento del stock / Fino ad esaurimento dello stock / Até esgotamento do stock*

