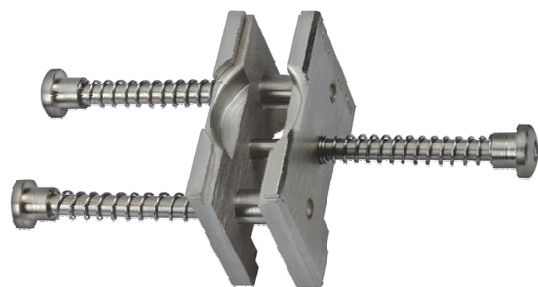


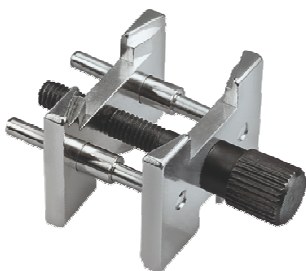
MOVEMENT HOLDERS

Extensible and reversible movement holders.



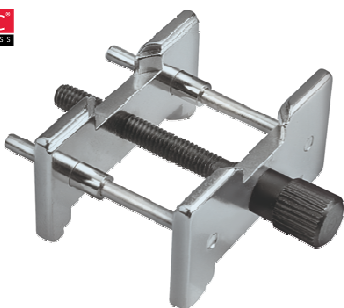
MSA	Calibres ""	Size	Kg
09.002	3 3/4" ... 12 1/2"	60 x 25 mm	0.025

Nickel-plated brass extensible and reversible movement holder with springs.



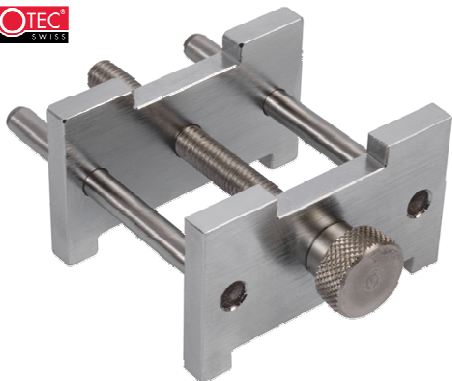
MSA	Calibres ""	Size	Kg
09.003	3 3/4" ... 11"	40 x 25 mm	0.032

Extensible and reversible steel movement holder with screw, 3 3/4" ... 11".



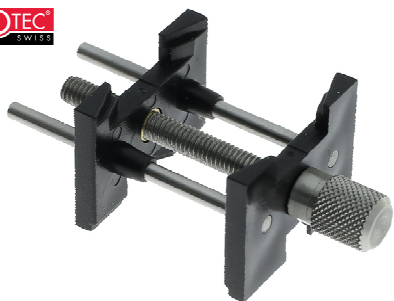
MSA	Calibres ""	Size	Kg
09.004	8 3/4" ... 19"	50 x 37 mm	0.042

Extensible and reversible steel movement holder with screw.



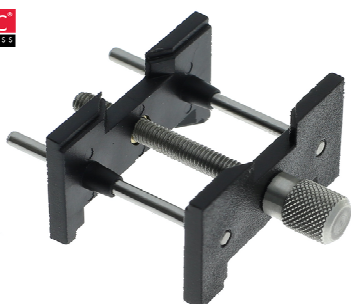
MSA	Size	Kg
09.005	75 x 50 mm	0.138

Extensible and reversible steel movement holder with screw for pocket watches.



MSA	Calibres ""	Size	Kg
09.103	3 3/4" ... 11"	55 x 25 mm	0.027

Extensible and reversible synthetic movement holder with screw.
Tightening on external Ø 12...30 mm.



MSA	Calibres ""	Size	Kg
09.104	8 3/4" ... 19"	55 x 38 mm	0.028

Extensible and reversible synthetic movement holder with screw.
Tightening on external Ø 30...48 mm.

Assortment of plastic movement holders.



See chapter **PERF.**