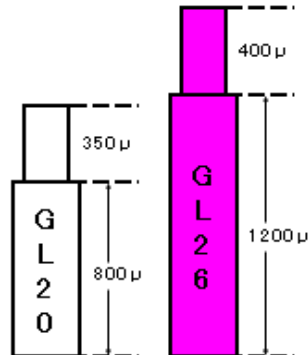


# Cal. GL26

## SLIM G SERIES



### 1. Basic Specification

|                            |                                    |
|----------------------------|------------------------------------|
| <b>Calibre</b>             | GL26                               |
| <b>Ligne</b>               | 6 3/4 x 8'''                       |
| <b>Overall length</b>      | 15.3 x 18.2                        |
| <b>Case fitting length</b> | 15.3 x 17.8                        |
| <b>Total height</b>        | 2.28mm                             |
| <b>Hands</b>               | 2 Hands                            |
| <b>Battery Life</b>        | 5 Years                            |
| <b>Battery</b>             | SILVER OXIDE SR621SW or equivalent |

#### < Time Standard >

Type of quartz : Tuning fork type quartz crystal  
 Frequency : 32,768Hz  
 Accuracy : ±20 second / month worn under normal circumstances

#### <Others>

Driving system : Two-pole stepping motor  
 Jewel : No(0) jewels

#### <Additional Mechanisms>

Powercell Saving Reset Mechanism(PSRM)  
 Over-loading Compensation Device(OLCD)  
 Digital Frequency Control(DFC) for time adjustment

#### < Balanceable weight of hand >

Minute hand Max. 0.4μNm

## 2. Separated Parts

|              |         |
|--------------|---------|
| Calibre      | GL26    |
| Setting stem | 065-541 |

## 3. Remarks

### \* Measurement of time rate

The unit(gate) time of measurement must be set at "10 sec." or integer fold value of 10 sec. Owing to the DFC system, and the measurement must be performed in the form of complete watch.

### \* Marking on movement

**NO JEWELS  
( CAL. NO.)  
MIYOTA CO.  
JAPAN**

### \* Typical clearance

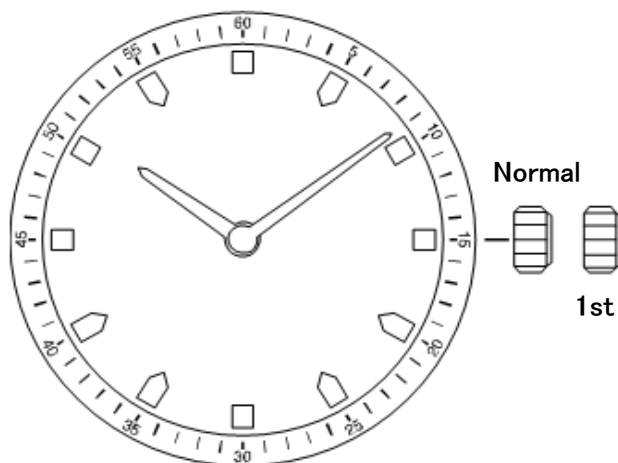
|  |                |
|--|----------------|
| Mov't - Caseback   | minimum 150 µm |
| Top of hands - Glass   | 300 - 400 µm * |
| * subject to the glass, case structure, and the length of hand |                |

### \* Interchangeability of appearance components:      \*respectively Date to Date

|                                   |  |
|-----------------------------------|--|
| Dial Foot position & the diameter | same as Cal. 1L26  |
| Date window position              | same as Cal. 1L26  |
| Hands                             | same as Cal. 20,21,1L/1M series*   |
| Mov't Holder                      | same as Cal. 1L26  |
| Case                              | GL26 is slightly thicker than 1L26. please make sure if your previous case can fit or be modified. |

## 4. Instruction Manual

### 【Displays and Buttons】



### A) SETTING THE TIME

1. Pull the crown out to the 1st Click Position.
2. Turn the crown to set hour and minute hands.
3. After the time has been set, push the crown back to the Normal position.

*These specifications might be changed without prior notice.*

**CITIZEN WATCH CO., LTD.**

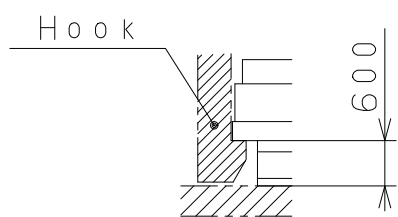
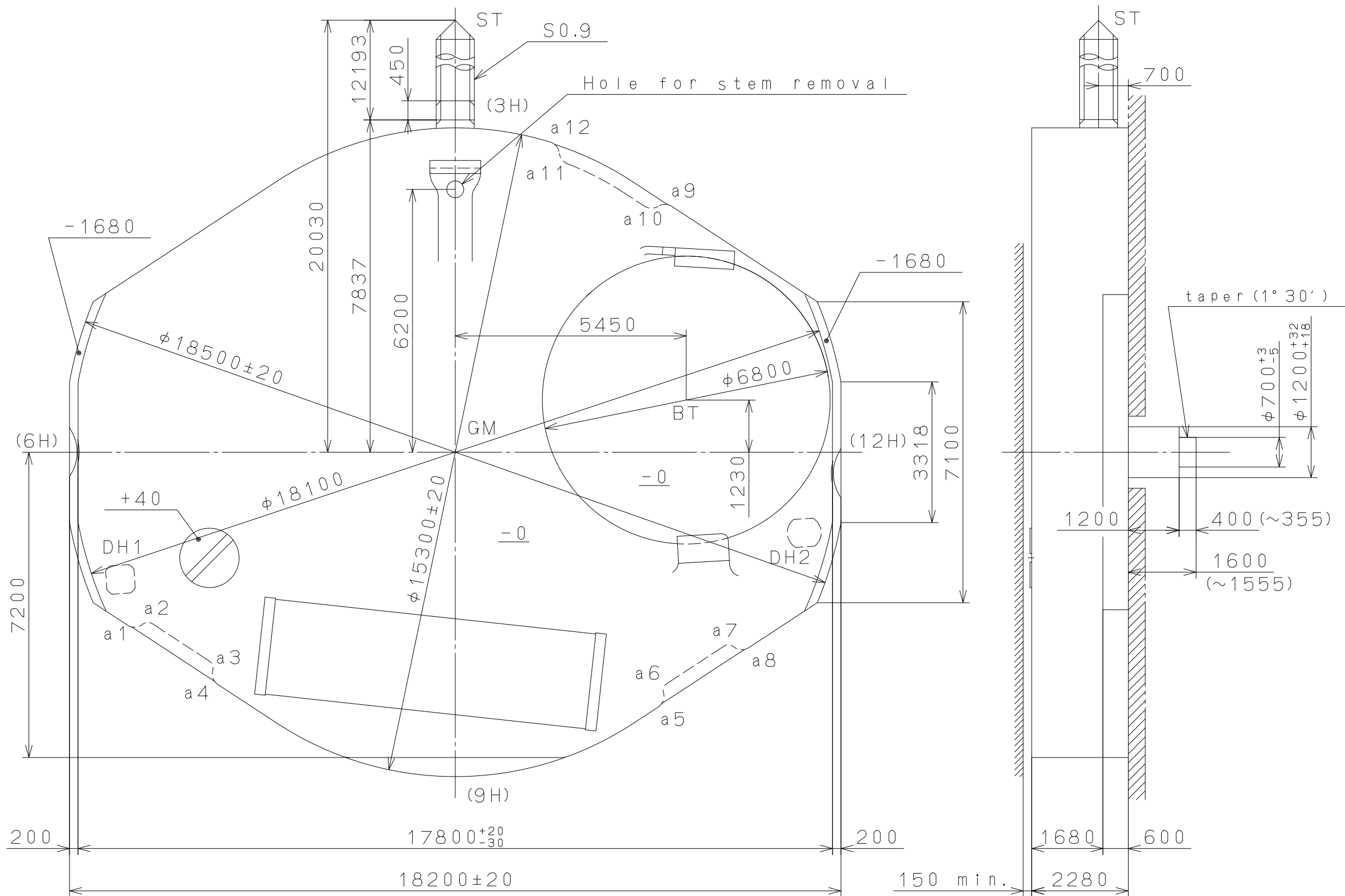
CONFIDENTIAL 2013/06/17 (14:01:58)

This drawing is provisional and subject to our reconfirmation and/or revision without notice.

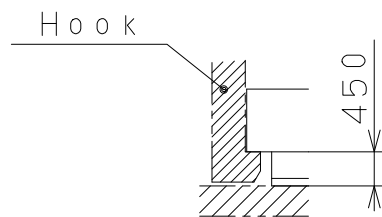
DH1~DH2=16171 (±20)

Coordinates

| Mark | X     | Y     | R   |
|------|-------|-------|-----|
| GM   | 0     | 0     | —   |
| DH1  | -7900 | -3000 | —   |
| DH2  | 8234  | -1900 | —   |
| a 1  | -7569 | -3828 | 300 |
| a 2  | -7252 | -4215 | 200 |
| a 3  | -5914 | -5092 | 200 |
| a 4  | -5433 | -5228 | 300 |
| a 5  | 4625  | -5757 | 300 |
| a 6  | 5106  | -5621 | 200 |
| a 7  | 6444  | -4745 | 200 |
| a 8  | 6761  | -4358 | 300 |
| a 9  | 4947  | 5546  | 300 |
| a 10 | 4628  | 6054  | 300 |
| a 11 | 2754  | 7083  | 300 |
| a 12 | 2157  | 7026  | 300 |



Section a1~a4, a5~a8



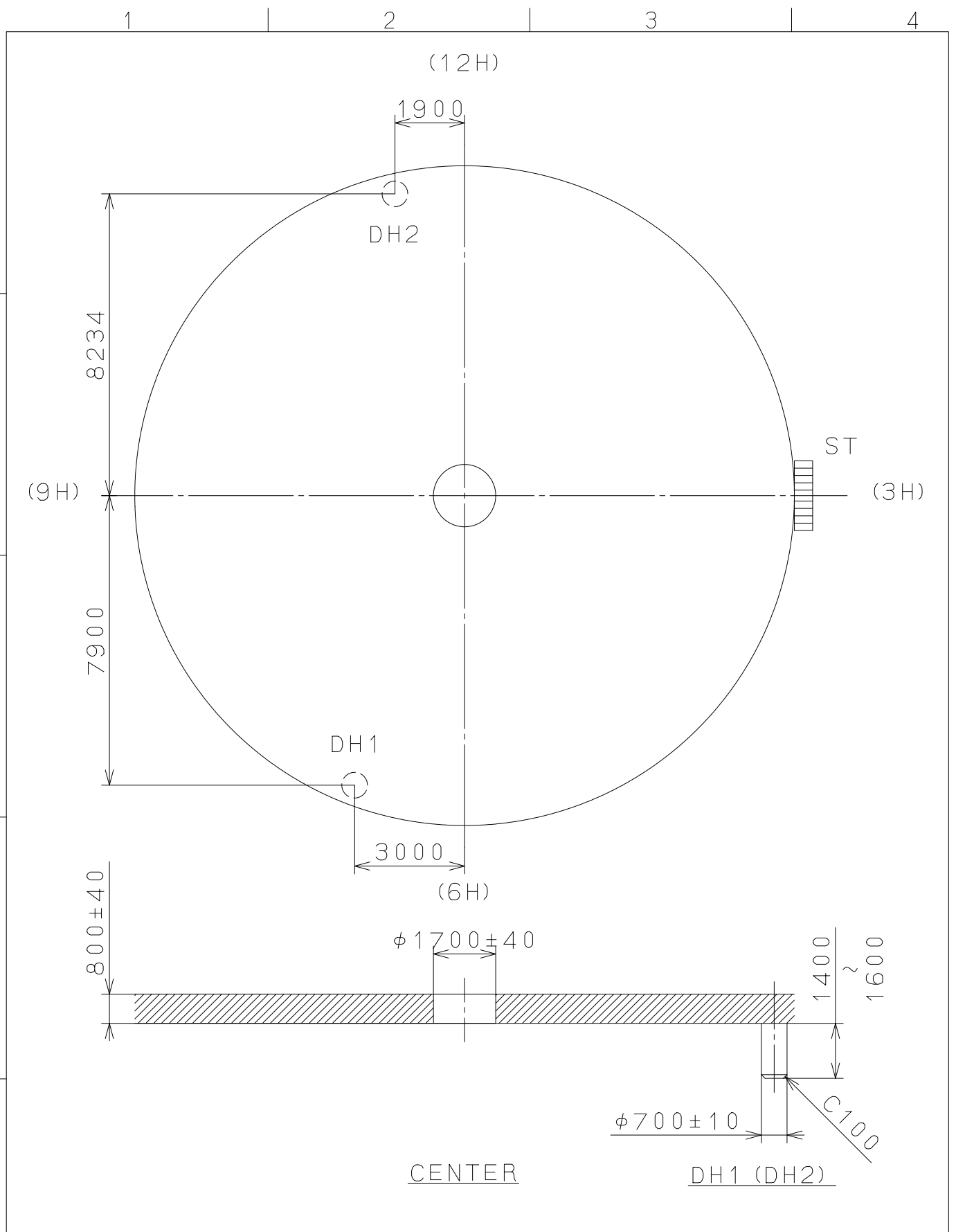
Section a9~a12

|                |      |             |          |                       |                |
|----------------|------|-------------|----------|-----------------------|----------------|
| △5             |      |             | Quantity |                       | Cal.NO.:       |
| △4             |      |             | Unit     | 1/1000mm              | GL26           |
| △3             |      |             | Scale    | 10:1                  | Parts No.:     |
| △2             |      |             | Date     |                       |                |
| △1             |      |             | Drawn    |                       |                |
| Mark           | Date | Description | Appr.    | Checked               | N. Suzuki      |
| Alterations    |      |             |          | Approved              | Name:          |
|                |      |             |          |                       | Frame for Case |
| Material       |      |             |          | Drawing No.: GL26C000 |                |
| Heat Treatment |      |             |          | General Tolerances    |                |
| Hardness       |      |             |          | Dimensions            |                |
| Plating        |      |             |          | Angles                |                |

**MIYOTA**

CITIZEN WATCH CO., LTD. TOKYO, JAPAN

This drawing is provisional and subject to our reconfirmation and/or revision without notice.



|                |      |             |                    |             |                                      |
|----------------|------|-------------|--------------------|-------------|--------------------------------------|
| △              |      |             | Quantity           |             | Cal.NO.:                             |
| △              |      |             | Unit               | 1 / 1000 mm | GL26-S0A                             |
| △              |      |             | Scale              | 7 : 1       | Parts No.:                           |
| △              |      |             | Date               |             |                                      |
| △              |      |             | Drawn              |             |                                      |
| Mark           | Date | Description | Appr.              | Checked     | Name:                                |
|                |      | Alterations | Approved           | N. Suzuki   | Indications for Dial                 |
| Material       |      |             |                    |             | Drawing No.: GL26D0AS                |
| Heat Treatment |      |             | General Tolerances |             | <b>MIYOTA</b>                        |
| Hardness       |      |             | Dimensions         |             |                                      |
| Plating        |      |             | Angles             |             |                                      |
|                |      |             |                    |             | CITIZEN WATCH CO., LTD. TOKYO, JAPAN |